



2021 GDLN Blended Learning Program

Education and HRD in the Era of a New Normal



GLOBAL
DEVELOPMENT
LEARNING
NETWORK



Program Objective



Knowledge sharing for sustainable development and global prosperity is one of the key motivations behind establishing KDI School of Public Policy and Management. KDI School understands the valuable role the Global Development Learning Network (GDLN) can play as an effective tool for knowledge sharing, especially in the midst of the COVID-19 crisis.

KDI School annually offers the blended learning program that focuses on Korea's key development experiences and valuable lessons learned. The GDLN Korean Center, which is housed within KDI School, is committed to providing optimal opportunities for development practitioners all over the world to learn from not only Korea's development experiences, but also to offer peer-to-peer learning opportunities among participating practitioners.

Since 2001, the GDLN partners have worked together to build a network of global institutions dedicated to promote sustainable development by closing the digital-divide through distance learning technologies. The value of GDLN has become more apparent as we struggle to conduct our daily lives in the midst of the COVID-19 pandemic.



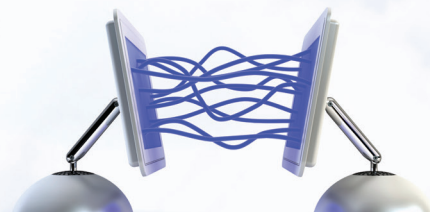
The pandemic has forced the traditional learning environment to change as most schools, universities and learning institutions have adopted e-learning systems to substitute offline classes that are no longer available. The impact of COVID-19 on education sectors goes beyond a transition from face-to-face education to e-learning channels. The pandemic will have far-reaching consequences for our education sectors, but also for the changing nature of work and how we work.

In line with these issues, this year's GDLN Distance Learning Seminar Series will focus on the topic of "Education and Human Resource Development in the Era of a New Normal." The aim of this Distance Learning Seminar Series is to learn how we can embrace the changes that COVID-19 has brought to our education and HRD systems by taking a close look at Korea's experience in addressing this crisis in these sectors.

The history of Korea's education policies, how Korea responded to the pandemic in the education sector, and the likely impact of COVID-19 on the education and HRD systems across the world will be addressed during the GDLN Distance Learning Seminar Series. Due to the on-going COVID-19 pandemic and lingering travel restrictions, the face-to-face training part of the program will be announced later in the year.



Program Structure



I. Distance Learning Seminar Series

KDI School's Distance Learning Seminar Series will cover lessons on various dimensions of education and human resource development in the context of the pandemic, highlighting some of our more notable lessons and experiences. The program consists of eight GDLN videoconference seminars that are delivered over a two-month period.

II. Face-to-Face Training Program

To enhance the overall learning experience of this program, the videoconference seminars will be followed by a face-to-face training program in Seoul, Korea. This is a unique opportunity for participants to view Korea's exemplary policies in action and visit relevant organizations and cultural sites to witness firsthand what Korea has achieved today in this field of education and human resource development.

Participants who have attended all eight of the videoconference seminars of the Series are eligible to apply to attend the Face-to-Face component of the program. Selected participants will be entitled to roundtrip airfare and housing while attending the program.

Due to the COVID-19 pandemic, the feasibility of hosting the Face-to-Face training program will be determined later in the year. KDI School will make announcements concerning this part of the training program after the Distance Learning Seminar Series.





Schedule



2021 GDLN Distance Learning Seminar Schedule

	Topic	Date
1	Overview of Korea's Human Capital Development and Education Policies and Where We are Today	March 3
2	International & National Assessments: Quality and Equity in Education in Korea	March 10
3	Korea's Response to its e-Education System during the Pandemic	March 17
4	New Challenges and Opportunities for Technical and Vocational Education and Training (TVET) in the Post-COVID-19 Era	March 24
5	Australia's Experience and Views on Education During the COVID-19 Pandemic	March 31
6	Major Challenges in Education in the Developing World Post-COVID-19	April 7
7	Conceptualizing Development in "ICT for Education"	April 14
8	Digital Literacy for HRD	April 21

* The time of all eight VCs is set for 16:00~17:30, Korea time zone.



Who Should Attend

Who Should Attend

The Blended Learning Program at KDI School is intended for experienced managers, general development practitioners and stakeholders who are currently involved in the education or HRD development area.

Application Process

Due to COVID-19, all eight videoconferences will be hosted on the Zoom Webinar. Participants are encouraged to access the online live seminar through the zoom link KDI School will send every week.

Individual participants should submit an online application form, which is available on the www.gdln.or.kr website.

In case the participant is not available to join the live Zoom sessions due to public holidays or other circumstances, please consider the following options in lieu of your inability to attend the videoconference. Participants may watch the recorded videoconference on the GDLN website (www.gdln.or.kr), and submit a reaction paper to gdlnkdis@gmail.com. Reaction papers should include your key takeaways from that session and any applicability or comparisons you can draw to your local context.

Participants who have met all the requirements of the online segment (attendance, reaction paper, etc.) of the Blended Learning Program can apply for the face-to-face training later this year. If you have not completed the online segment you are not eligible to apply for the face-to-face component of this program in Korea. *However, please note that the face-to-face training program will be confirmed pending COVID-19 circumstances and travel restrictions.*

For additional information regarding the Distance Learning Series Program, please visit the www.gdln.or.kr site and click on the *Blended Learning Program* tab, followed by the *Programs* tab.

Contact Information

KDI School of Public Policy and Management

263 Namsejong-Ro, Sejong-Si, 30149, Korea

GDLN Korea Coordinator

Grace Kim

Tel: +82-44-550-1252

Email: gdlnkdis@gmail.com/se_kim@kdiskool.ac.kr



About KDI School



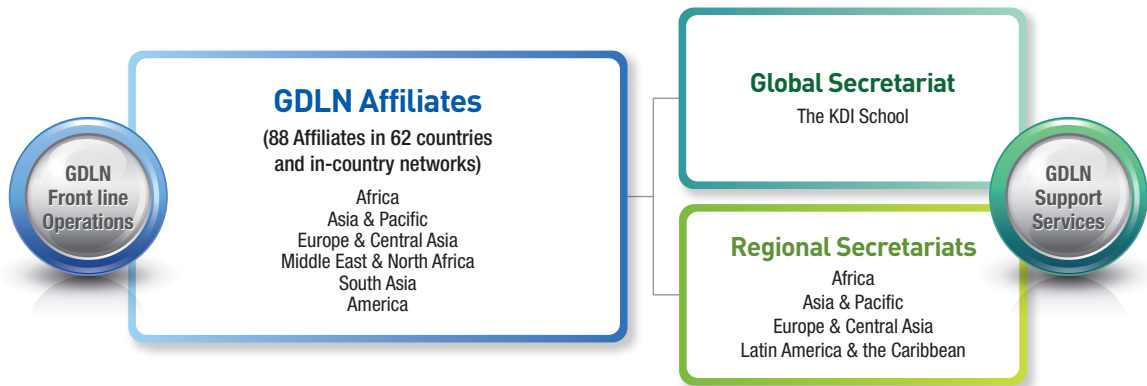
KDI School of Public Policy and Management was founded in 1997 as the educational arm of the Korea Development Institute (KDI), the country's leading economic policy think tank. KDI School was established with a two-fold mission: to produce international experts with theoretic knowledge and practical skills in the field of development economics and public policy; and to foster future leaders who can cope with the rapidly changing international environment and exercise global leadership in every sector of our society.

Since its inception, KDI School has cultivated over 5000 professionals from 120 different countries who have led positive change in their respective spheres of influence. The School has grown exponentially due to its unwavering commitment to excellence in teaching, promoting a truly international learning environment, and by serving as a global hub for knowledge sharing.





About GDLN Korea



GDLN (Global Development Learning Network) is a unique partnership of over 88 affiliates in more than 62 countries that provides learning and knowledge exchange activities globally each year. GDLN affiliates design customized learning solutions for those working in development by taking advantage of a large pool of resources. The tools for communication include a combination of face-to-face interactions, webinars, e-learning content, and videoconferences.

In 2001, KDI School was designated as the only affiliated Korean center. Our vision is to provide integrated educational opportunities on Korea's development experiences for policy makers and development practitioners around the world through blended learning programs. Our goal is to connect with policy makers and related institutions of development to effectively contribute to balanced, global development and enrich development cooperation.





2021 GDLN Blended Learning Program

Education and HRD in the Era of a New Normal



KDI SCHOOL
KDI School of Public Policy and Management

263 Namsejong-Ro, Sejong-Si, 30149, Korea

Tel: +82-44-550-1252

www.kdischool.ac.kr / www.gdln.or.kr