



Celebrating the **20th anniversary**, we look forward to **another 20 years**.

THE GLOBE

KDI School of Public Policy and Management
263 Namsejong-ro, Sejong-si, 30149, Korea
Phone (044) 550-1114 / www.kdischool.ac.kr

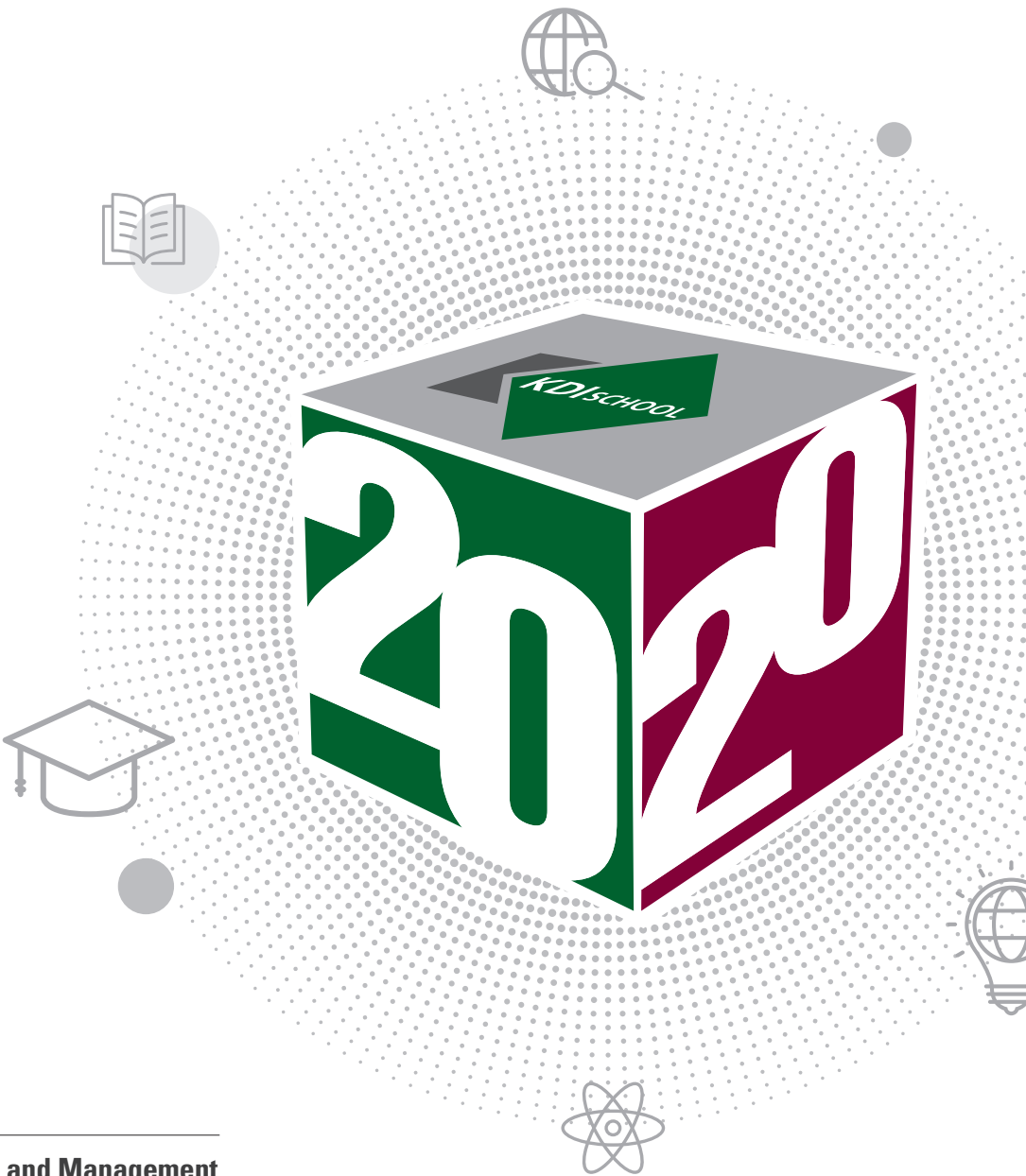
THE GLOBE

2017 Spring

KDI School of Public Policy and Management

THE GLOBE

2017 Spring



20th ANNIVERSARY
KDI SCHOOL
FOR THE NEXT 20 YEARS

KDI School of Public Policy and Management

News & Events

06

KDI SCHOOL 20th Anniversary
Special Lecture Series has kicked off



08

No Room for
Complacency

10

The World Bank and KDI School
taking on the online educational
platform world with Policy Lessons
from South Korea's Development

12

Signing Ensures Quality
Exposures for Students

14

2017, the New Year of
Opportunities at KDI School



16

Training for the 4th Industrial Revolution:
KDI School holds unique project-based,
hybrid learning program for
senior Thai officials



17

KDI School, Connecting Leaders
All Around the World Through
Knowledge

18

KDI School Student shows
"behind the scenes" of government work
in Sejong City promotional video

20

Professor Park's Message:
Federal Reserve Through its Chairs



22

KDI School Business Start-up Program,
take your idea to the next level

24

Start Mapping out Your Future
with Career Development
Lecture Series

THE GLOBE

Publisher Dean Hong Tack CHUN **Supervisor** Associate Dean Man CHO **Planning Coordinator & Editor** Hye Jung YANG / Ji Yoon HONG / Yeonhwa GONG **Student Reporters** Valentin CROITORU (2017 MDP, Moldova) / Rosa DALITUICAMA (2017 MDP, Fiji) / Tracy Amanda SMITH (2017 MPP, Guyana) / Lucia Nathali Salazar MEDINA (2016 MPP, Guatemala) / Ranel Ram CHENG (2016 MPP, The Philippines) **Design&Printing** SEILFOCUS 02-2275-6895

Spring 2017

Campus Life

28

2017 Spring Hiking to
Mount Gyeong



30

Dialogue
with the Dean

32

Clubs Empowering
Students at KDI School

34

The African Development Forum:
A dynamic platform for future leaders to be a
united voice for Africa



36

Knowledge Sharing and Collaboration
with the World Bank
Life in the diverse KDI School community

38

KDI School,
a gateway to improved
competence around the world

40

KDI School intensifies programs
for gender sensitivity on campus



42

GMP students leave their
mark in KDI School
with Kimchi and so much more

44

KDI School
— A green campus that cares
about tomorrow

Alumni News & School Updates

48

KDI School student and alumnus
awarded for MBN Economic
Research Paper Competition &
the Ten Outstanding
Young People of Colombia

49

Alumni Gatherings

50

Alumni News Update

52

New Faculty and Staff Updates

54

We Shape the Globe



News & Events

06

KDI SCHOOL 20th Anniversary
Special Lecture Series has kicked off



08

No Room for
Complacency

10

The World Bank and KDI School
taking on the online educational
platform world with Policy Lessons
from South Korea's Development

12

Signing Ensures Quality
Exposures for Students

14

2017, the New Year of
Opportunities at KDI School



16

Training for the 4th Industrial Revolution:
KDI School holds unique project-based,
hybrid learning program for
senior Thai officials



17

KDI School, Connecting Leaders
All Around the World Through
Knowledge

18

KDI School Student shows
"behind the scenes" of government work
in Sejong City promotional video

20

Professor Park's Message:
Federal Reserve Through its Chairs



22

KDI School Business Start-up Program,
take your idea to the next level

24

Start Mapping out Your Future
with Career Development
Lecture Series

KDI SCHOOL 20th Anniversary Special Lecture Series has kicked off

Valentin CROITORU (2017 MDP, Moldova)
Rosa DALITUICAMA (2017 MDP, Fiji)



This three-dimensional cube, rather than being a line or a square, represents a new world that is separate from the existing world, which KDI School aims for. Looking like a gift, it also means that KDI School welcomes and expects to meet the new world with an excitement of unwrapping a precious gift. The two '20's on the sides are to celebrate the past 20 years and to prepare for the next 20 years. Also, the dark green and wine colors signify the enthusiasm of KDI School and its vision to not only become the leading institution but also provide directions for the future in the upcoming decades.



In recognition of its 20th anniversary, KDI School has developed a series of seminars conducted by special speakers. This series will bring some of the renowned thinkers to speak about the subject titled “Korea’s Innovation and Leap” to the KDI School community members seeking for the future of Korea. A total of 9 seminars will be held once a month from March to November, to provide a great opportunity for knowledge sharing. The first two lectures explored the current economic affairs and the 4th industrial revolution.

“Getting Korea Ready for the 21st Economy: Turning Challenges into Opportunities”

The series was kicked off by **Dr. Joon-Kyung KIM**, the President of KDI School, who shared his knowledge on the Korean economy. On March 22, Dr. KIM started the special lecture by highlighting the institution’s accomplishments and sharing the vision for the School. He then addressed current status and structural problems of the South Korean economy through the lens of income inequality and the ageing society. Upon showing the analysis of how the sectors of capital, labor, and productivity contributed to growth, especially in recent years, he pointed out that productivity has fallen sharply due to delays in restructuring and inefficient regulations. The second part of the lecture broadened the scope of analysis regarding Korea’s economy. As the convergence of IT and existing industries accelerates, the demand for the ability to handle simple and repetitive tasks will decrease rapidly and demand for the ability to solve



complex problems and communicate with others is expected to increase rapidly. Therefore, the government should lead discussions on economic and social changes due to technological progress, while making efforts to reform the educational sector, implement mid-life education programs and strengthen social safety nets. In the third part, the lecture braved the audience with some tough questions; how does the Korean economy innovate in order to respond positively to the emergence of new types of business structures, and how should the government deal with changes in labor demand, now that social competence becomes more important? Dr. KIM went on to stress about an important aspect that is being implemented at KDI School in order to better prepare the students for the changes of the future decades - a shift from teacher-led lecture classes to Project-Based Learning, as mutual understanding and trust are formed in the course of discussion and cooperation among students. In the final part of the lecture, the speaker reconfirmed South Korea’s ability to improve and innovate by presenting a History of Korea Overcoming Challenges throughout the mid-60s, early 80s, and the 1997 financial crisis. Having overcome these challenges, South Korea remains to be a textbook example of economic reversal and resilience. Dr. KIM proudly addressed that KDI School will work towards preparing new generations of policymakers that will ensure South Korea’s prosperity and continued development.

“From Imagination to Innovation”



The second seminar was brought to the public by **Mr. Jong-lok YOON**, the president of National IT Industry Promotion Agency*, and the former second vice minister of the Ministry of Science, ICT

and Planning, on April 12. “Software education will be mandatory for all primary and high school students from 2018,” said Mr. YOON, to identify soft power as a key success factor in coping with the 4th industrial revolution. According to him, software enables imagination into great innovation, and to allow for imagination to be challenged and innovative, ‘software-oriented thinking’ needs to be complimented with enriched imagination, creativity, continuous innovation, learning from failure, and flexible and logical thinking. Mr. YOON emphasized that as opposed to the 1st, 2nd, and 3rd revolutions, the 4th industrial revolution will not require human resource as input but rather good imagination. “Korea has good imagination and the 4th industrial revolution will need meaningful solutions... As far as digital soil is concerned, we now have to find good seeds. These are very important to our economy,” said Mr. YOON who added that “someone once told me that to remember is going back to the past that you have experienced, but to imagine is thinking about the future that you have never experienced.” That someone was Israel’s former President and Prime Minister, the late Shimon Peres. He also spoke on the Jewish concept of “Chutzpha,” which denotes a “spirit of creativity.” He encouraged attendees of the lecture, especially the students, to take note of the concept “Chutzpha” and convert their imaginations to innovations for their respective countries. Mr. YOON’s lecture ended in well-deserved applause from behalf of his audience. THE GLOBE

*The National IT Promotion Agency was established in 1998 to reinforce the competitiveness of the IT industry and contribute to the economic growth of Korea through the efficient support and laying the groundwork for the industrial technology promotion.

No Room for Complacency

—
Rosa DALITUICAMA (2017 MDP, Fiji)

“KDI School of Public Policy and Management will continue to strive for excellence and quality as it celebrates its 20th anniversary this year.”

These were the comments echoed by the former Minister for Education, Science and Technology and the School’s first Academic Dean, **Professor Ju-Ho LEE**.

Speaking to the Globe, Professor LEE said that KDI School had expanded its size over the years, but the focus on providing premier quality education had not changed. “We are becoming a global leader in our field, an innovator. We’ve done well for the last 20 years and the work must continue. There is simply no room for complacency if KDI School is to become the best in the world. We must continue to be innovative and unique,” he said.



According to Professor LEE, the decision to establish KDI School was made following the education reform efforts of the KIM Young-sam Government in 1995. “The

establishment of international graduate schools was an important agenda. So an Education Committee was set up to oversee the establishment of international graduate schools and around four to five were selected including Seoul National University, Yonsei University, Korea University and others.”

Following on from this, the education taskforce team for KDI School was launched with Professor LEE, Jong-Il YOU, Sang-Woo NAM, Hun Joo PARK and Seung-Joo LEE as founding members. At the time, Professor LEE thought that the Korea Development Institute was the best think tank in Asia and as such, it was only right that a graduate school was established to nurture the reservoir of knowledge that it had accumulated over the years.

“The KDI served enormously for the economic development of Korea, playing an important part in designing key policies. Some KDI Fellows thought of establishing a graduate program because the KDI had very good manpower and accumulated huge knowledge and experience in the development of Korea,” said he.

“I agreed with establishing new things, especially universities and new projects that would bring about big changes. You need a new player to introduce something new. We thought that a new player could do a different thing, a different innovation in higher education in Korea. That’s why we decided to establish an international graduate school because there were no schools that taught 100% in English as well as invited foreign students and foreign scholars before KDI School.”

“We started from scratch, so it’s different from existing universities. We’ve taken advantage of starting from nothing,” Professor LEE shared. Professor LEE maintained that KDI School was revolutionizing the education of the era in that it examined the future of Korea’s higher education.

“Although the KDI has mainly economists, economics and management are inseparable particularly when you think about educating people. Because one has to be multidisciplinary, we thought of a new school that can contribute to policies and also to management in the private sector. We have been trying to invite scholars from diverse academic backgrounds not just limited to economic principles, but we also invite experts from management, international relations and so forth,” he said. Professor LEE added that inviting foreign scholars and students from around the world and discussing policy issues were important for both the Korean government and the people. THE GLOBE



The World Bank and KDI School taking on the online educational platform world with Policy Lessons from South Korea's Development

Tracy Amanda SMITH (2017 MPP, Guyana)



Meet the instructors



Shahid Yusuf

Senior Economic Adviser
World Bank Group



Sayyora Krulikowski

Operations Officer
World Bank Group



Taejong Kim

Managing Director,
Development Research and
Learning Network
KDI School of Public Policy
and Management



Hyoung Il Lee

Senior Climate Change
Specialist, Global Practice
Group Sustainable
Development Vice
Presidency
World Bank Group



Byoungjoo Kim

Visiting Professor
KDI School of Public
Policy and Management

With the cooperation of Professor Taejong KIM, Professor Byoung-joo KIM, and KDI School's Development Research and Learning Network, the World Bank Group has launched a free online course - Massive Open Online Course (MOOC) on Policy Lessons from South Korea's Development. With over some 7,600 participants from as many of 178 countries, the course was delivered during 17 January to 19 February 2017 with the intention of educating its participants on the development of Korea's policies.

The aim of the course was to sensitize the audience around the world on the factors contributing to Korea's rapid development from the 1960s to the 1990s, and to discuss how some of the policies that were employed then can still be effective today. The course also explored Korea's development in the trade and manufacturing industry. Finally, the course looked at some of the development challenges of the country and its coping mechanisms.

The course was facilitated under four modules, namely: (1) Korean development in global perspective; (2) Rapid Growth: the first three decades; (3) Evolving a 21st Century Growth Model; and (4) Post Industrial Development Challenges. Statistics showed that 53% of the MOOC participants were from low-middle income countries which meant that the course would have reached its key audiences from developing countries, such as Bangladesh, Cambodia, Ethiopia, Ghana, India, Indonesia, Kenya, Myanmar, Nigeria and Pakistan. This proves that the course has helped shape informed citizens around the world who may, in turn, be more equipped to make decisions as it concerns development policies.

Not only did the course attract participants from

around the world but it also gathered respectable facilitators who facilitated the modules. Some of the notable educators include Professor Dwight PERKINS, a professor of Political Economy, Emeritus from Harvard University, who facilitated on the Korean Development in the East Asian context, and Professor Ju-Ho LEE, a professor in Labor Economics, Education and Social Policy, Science and Technology Policy at KDI School, who facilitated a lecture on Human Capital and focused on the key to Korea's growth performance. In the third week of the program, Mr. Soogil YOUNG, the Director of UN Sustainable Development Solutions Network in Korea and the Visiting Professor of KDI School; Professor Sungchul CHUNG, who teaches Science and Technology Policy at the University of Science and Technology; and Mr. Danny LEIPZIGER, a professor of Practice of International Business at George Washington University, facilitated lectures on evolving a 21st Century Growth Model. In the final week, Professor Barry EICHENGREEN of University of California, Professor Taejong KIM of KDI School, Professor Eun KIM from Ewha Womans University and Economist Mr. Shahid YUSUF from the George Washington University provided lectures on the post industrial development challenges faced in Korea.

At the end of the course, materials were made available online for one year for reviewing by anyone interested in Korea's growth and respective policy lessons. Many expressed their satisfaction with the outcome and looked forward to many other study areas from the partnering institutions. Participants interested in securing verification certified were given a chance to do so at the expense of a small fee. ^{THE GLOBE}

Signing Ensures Quality Exposures for Students

Rosa DALITUICAMA (2017 MDP, Fiji)

KDI School has two brand new Memorandum of Understanding (MOU) agreements in place to help facilitate regional cooperation as well as educational partnership. On February 9, the School signed an MOU with the Incheon Free Economic Zone (IFEZ). The MOU which was signed by KDI School President Dr. Joon-Kyung KIM and the Commissioner of IFEZ, Mr. Young Geun LEE, ensures mutual cooperation and administrative support between the two entities. KDI

School has already visited IFEZ 13 times in the year 2016 as part of the field trip. Students and alumni of KDI School will now enjoy more opportunities for workplace inspections thanks to this agreement. According to Dr. KIM, the IFEZ will strengthen the School's endeavor to provide the best openings for industrial exposure especially to its international students, moreso to government officials who will have the chance to network directly with the IFEZ and

its officials. The IFEZ will be especially sharing its experience and learnings with developing countries that align themselves with public/private partnership business models.

The IFEZ is home to 12 highly significant international organizations including the Green Climate Fund (GCF), which was established in 2010 by 194 countries party to the UN Framework Convention on Climate Change (UNFCCC). It also made a meteoric rise as a mecca of bio-industry including earning the title of second manufacturing output of biological product in the world as a sole city. Incheon City has also partnered with Weihai City in the Province of Shandong in China to be designated as a Korea-China Free Trade Agreement (FTA) local economic cooperation zone. Other Chinese cities like Dalian City in the Liaoning Province have also expressed interest in doing the same.

Also on April 13, the School signed an agreement with the Korea Water Resources Corporation, or K-water, in the presence of KDI President Dr. Joon-Kyung KIM, K-water CEO Mr. Hak-Soo LEE and other esteemed guests. K-water is the governmental agency for comprehensive water resource development and is providing both public and industrial water in South Korea. In light of the MOU, KDI School has made a promise to allow selected K-water employees to enter KDI School and take tailored courses that match their professional needs. Also, KDI School and K-water will establish networks among the students in and outside Korea to bring development in the field of water resources management. THE GLOBE



2017, the New Year of Opportunities at KDI School

Rosa DALITUICAMA (2017 MDP, Fiji)



“Many observe that the global economy is in the midst of a digital revolution and the 4th industrial revolution that will change how we live, how we work and how we relate to each other. In the midst of these changes, we see the emergence of new economies such as sharing economies, giving economies and digital economies which are being driven in part by the rapid advancement in information technology. In these economies, workers with flexibility and the right skills, expertise and experience can succeed.”

These were the sentiments echoed by the President of KDI School of Public Policy and Management Dr. Joon-Kyung KIM at the opening of the 2017 Spring Semester Orientation Week, which was held both for full-time and part-time students during January 21 to 23.

This new year is significant in that KDI School now officially became the adopted home of 280 new students from over 72 countries around the globe whose duration of studies will range from one to two years; 170 are domestic students while the remaining 110 are international students inclusive of Ph.D. students.

Of the 280 new enrolments, 40% are Public Policy students, 31% Development Policy students while the remaining 29% are Public Management students. Furthermore, Asian students make up 47.3% of total enrolments while the remaining 52.7% is shared among the regions of Africa (29%), Americas (16.4%), Europe (6.4%) and Oceania (0.9%).

In his address, Dr. KIM also shared that the new semester will usher in a new chapter in the lives of many saying that the School campus and

community will be a unique place of learning that will allow students to connect with Korea and with other students from around the world, who have been drawn to KDI School for its wide range of degree programs, outstanding faculty members and global reputation.

He also welcomed new scholars to the school and reiterated that they will deepen the school’s research knowledge and offer students critical insight on global economy and public policy. Speaking on economic development, Dr. KIM emphasized that while emerging economies hunted for workers with flexibility, the right skills, expertise and experience, they also reward problem solvers who are motivated, innovative and willing to take risks to address the biggest challenges and opportunities in business and public policy.

“We live in an increasingly global world. As such, we want to expose our students and faculty members to global research and teaching,” said Dr. KIM.

He said the School stood ready to assist students cultivate the knowledge, skills and the mindset needed to benefit from the new economy and the fourth industrial revolution adding that this will prepare them for various challenges and opportunities in life and their professional careers. In addition to presentations about life in Korea and what will be expected of students, the orientation week also included the introduction of the new students to faculty members and support staff, and other invaluable information that would enable a smooth transition to student life at KDI School. THE GLOBE

Training for the 4th Industrial Revolution:

KDI School holds unique project-based, hybrid learning program for senior Thai officials

Ranel Ram CHENG (2016 MPP, The Philippines)



The 4th Industrial Revolution has begun, posing challenges which require constant innovation and adapting to newer technologies. This new era has also ushered in changes in the way we interact, create policies, and share knowledge in an increasingly interconnected multicultural world.

Such innovations were on top of the agenda as KDI School, through its Capacity Building Center (CBC), hosted senior-level Thai government officials for its training on “Digital Public Sector for Sustainable Development” last March 2017.

A total of 150 Thai government officials, composed of Chiefs, Directors and Senior Experts coming from no less than 25 ministries and agencies including the Office of the Prime Minister, not only had a chance to visit Korea and learn about its development experience but also took part in a training workshop unlike any other.

This Civil Service Senior Executive Leadership Development Program was aimed at providing knowledge sharing between Korea and Thailand as the latter is set to begin implementation

of the Thai 4.0 project. It was thus fitting that these senior officers undergo a leadership development workshop in tune with the Fourth Industrial Revolution.

For the first time ever, the CBC merged project-based learning (PBL) and hybrid-learning program, which utilizes a more personalized approach to training with the aid of digital technology and modules, and applied them to a foreign audience of such stature.

In addition, the training workshop featured lecturers not only from KDI School but also senior Directors from the Korean Ministry of the Interior (MoI), thus providing not just theoretical or academic background information but also actual practical knowledge sharing between governments.

Through the use of this hi-tech PBL and hybrid learning approach, participants and lecturers alike were free to interact and communicate directly with each other. With the success of this pioneering training course, the CBC is gearing up for similar programs for officers from Vietnam, July, and India later this year. THE GLOBE



KDI School's Capacity Building Center pulled out all the stops as it held a unique hi-tech leadership development program to introduce senior Thai government officials to the Korean development experience and prospects for the Fourth Industrial Revolution.

KDI School, Connecting Leaders All Around the World Through Knowledge

Tracy Amanda SMITH(2017 MPP, Guyana)

All around the world, KDI School through the Capacity Building Center is making it possible for leaders to benefit from training programs that set out to build capacity through invigorating and inspirational lectures and site visits to organizations. In keeping with the previous years, this year is no different in the kind of programs executed by the Center in the field of economic development by developing public policy experts.

One such program that the Center executed this year was the Myanmar Statistical Training Program for Central Statistical Organization (CSO) held from February 20 – March 3, 2017 as a collaboration between KDI School and KOICA. The program was one of the MDI projects that Myanmar and Korea had signed in 2014.

In keeping with the never-before-seen change of political atmosphere in Myanmar due to a new constitution in 2008, elections in 2010 and Aung San Suu Kyi leading the 2016 administration Myanmar came to realize that they needed to establish a national baseline and national data collection. Because of the lack of expertise in data collection, the nation has seen many obstacles such as poor transportation and



telecommunication systems. Another difficulty is where due to the decentralized system, the concepts in collecting data are different by agency. Finally, the nation has no statistical training agency.

For these reasons, KDI School and KOICA have teamed up to organize this capacity training so as to improve the capacity of CSO and statisticians which will see a great improvement in the status of CSO in Myanmar. The program set out to advance national statistics under Myanmar's decentralized system and to improve the capacity in CSO. KDI School is committed to improving leadership and setting the bar in economic development all around the world and by training professionals in public policy to make the best decisions for their country's development is what KDI School pursues.

KDI School through the Capacity Building Center is also making it possible for other countries to negotiate and transact business on a diplomatic level through experience with these programs. It is hoped that the programs offered by the Center can in the near future continue to extend its reach and success towards being a key player in economic development. THE GLOBE



KDI School Student shows “behind the scenes” of government work in Sejong City promotional video

Ranel Ram CHENG (2016 MPP, The Philippines)



Sejong City has been home to KDI School for more than two years already. As the administrative heart of Korea, it is also home to government ministries, public research institutes, and other national agencies. In this environment, students of the School, especially those coming from different corners of the globe can catch a glimpse of government at work.

But one student, **Rony Rodrigo Maximiliano Rodriguez Ramirez (2016 MDP)** from Nicaragua went even further and got a chance to go behind the walls of Sejong City Hall and “experience” a typical day in the life of a government worker in a special promotional video produced by the Sejong City Government.

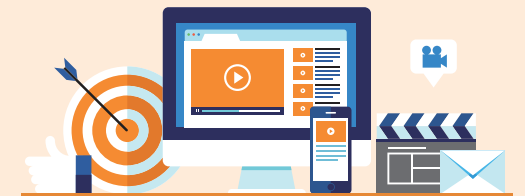
Rony, who is currently a representative of the

Econometrics Club, says this was his first time being involved in a formal video shoot. But on cam, he was a natural in drawing laughs and showing a lighthearted take on the hard work and dedication of Korean government employees. On top of that, this native Spanish speaker delivered the script entirely in Korean!

The GLOBE talked with Sejong City’s “Nicaragua-ssi” about his experience. Here’s an excerpt of our interview:

Q How did you become involved in the Sejong City promotion video?

A The general idea of the video is “a foreigner has a one-day work at the City Hall of Sejong and faces a lot of problems while working there.” Even though



the video is intended to be funny, it represents a lot of common problems in the Korean labor market (e.g., overtime work at night and during lunch time)... I received the information from the Students Affairs Division and they asked if I was willing to participate in the video, and I accepted the opportunity.

Q How was the experience for you overall?

A This is my first time in a formal video shooting. It was an interesting experience and I was a bit nervous at the beginning but after all, I tried to be natural.

Q In the video, you showed an “inside view” of working in the Korean government. Any insights you’d like to share from this experience?

A For sure, as a lot of people might know, Korean modern society has a culture rooted in a lot of work. The interesting part of this experience is that I got to know more about this side of the Korean Culture. In general, working until very late is still one issue to be tackled and I felt that a lot of people from the government shared this idea. Even though I cannot generalize this statement nor give a profound proof about it, I think that this inside view gave me more ideas and tools to share and to debate about it. Additionally, this happens not only in the Korean government but also in a vast majority of Korean private enterprises.

Q Any message to Korean workers now that you have seen this kind of environment?

A Like other countries, Korea also has its own labor market characteristics and problems. The main issue regarding the labor market I would say is that the overtime work experience. As culture changes, institutions change, and I think that in order to make an equilibrium between life and work, it is necessary to express and debate about these issues. This might help construct a better environment for Korean workers.

Q What was your reaction when the video came out? What did your friends (here in Korea and back home) say about your appearance?

A I strongly believe that I am not a good actor but it was better than I expected. I think that all the credits should go to the video director. He did a good job editing the video so I did not look that bad as I expected. In general, the reactions were good. My Korean friends said good things about it and my friends back home were guessing about the contents since they do not speak Korean language. I promise them to translate the video into Spanish but, for the moment, it is an unfulfilled promise. THE GLOBE

Professor Park's Message: Federal Reserve Through its Chairs

Lucia Nathali Salazar MEDINA (2016 MPP, Guatemala)



On March 17, **Professor Jong Ahn PARK** from the U.S. Federal Reserve gave a lecture on the Fed and the long way it has gone since its foundation. He started with a brief introduction of how the Fed was founded and explained the importance of the Fed as the central bank of the United States. He also introduced the five general functions the Fed utilizes to promote the effective operation of the U.S. economy and, more generally, the public interest; however, he put a particular emphasis on the role the Fed has at promoting stability in the U.S. economy through the monetary policy.

In addition, as the topic of this article suggests, the lecture focused on the Federal Reserve through its Chairs. Professor PARK continued the presentation by briefing students on the history of the Federal Reserve Chairman and the decisions made during their period of governance. By providing a clear view of how good and bad decisions have been taken by previous Chairman of the Fed, Professor PARK contributed to the students' understanding of how the decision-making process goes inside the Fed and the important role this decision-making process plays

in determining the direction of the U.S. economy. A point worth mentioning in this part of his presentation was the introduction of Janet YELLEN, the first female chairperson of the Fed. Even though, as with another previous chairman, there are so many eyes put on the impact her governance will bring to the economy, female presence at the Board of Governors of the Federal Reserve System is definitely a step forward at the Federal Reserve.

Despite the fact that many students had to leave before the lecture finished, Professor PARK did not leave it there and concluded his presentation by sharing one last story inside the Fed: Michelle's Smith path as the chief spokesperson for the Board. THE GLOBE



Thinking about launching your own business but do not know how to start?

KDI School Business Start-up Program, take your idea to the next level

—
Lucia Nathali Salazar MEDINA (2016 MPP, Guatemala)



“As the world continues to shrink and borders disappear, many new opportunities to create value arise for those who have entrepreneurial spirit and the skill set to take an idea to the next level.”

Those are the words of **Mr. Todd SAMPLE (2007 MFDI)**, a graduate of KDI School who is leading the Business Start-up Program at KDI School. For six months, KDI School has teamed up with Sejong Center for Creative Economy & Innovation to provide KDI School students with the opportunity to gain insight into how to create a successful start-up business in Session I and a chance to execute their business plan in continuing sessions.

All KDI School students were cordially invited to take part and add a unique facet to their KDI School experience. Students from more than 15 countries had the chance to attend this value-added program. The GLOBE got to catch up with **Mr. Edward William Osei-Bonsu BRUCE-LYLE, (2016 MPP)**, who provides readers with his unique experience in the start-up program.

Born June 24th, 1986, Edward is a graduate student of the University of Hertfordshire, United Kingdom, and a Planning Analyst with the National Development Planning Commission of Ghana. He joined KDI School in August 2016 under KOICA's Global Leadership in Economic Policy scholarship program.

Edward was motivated to join KDI School's Business Start-up Program because he saw it as an opportunity to further shape his business idea of providing a private model community center that offers social and study spaces for people of all ages and cultures, provides help and advice with finding

internship opportunities and supports small business owners to modernize their business offerings and improve customer satisfaction and loyalty through mystery chopper concept.

The above motivation for joining the start-up program meant Edward was looking forward to acquiring new knowledge on how best to pitch his ideas to raise the needed funds either through crowd funding or a good marketing strategy using both traditional and online means. Enrolling on the KDI School Business Start-up Program was therefore timely as it gave Edward an opportunity to know what to look out for when trying to start a business, even in foreign markets where there are chances of experiencing a culture shock. Indeed, Edward learned that, certain weaknesses that may be established during a SWOT analysis of a market can be great opportunities for successful start-up business.

The knowledge acquired during the program will help Edward better shape his idea to draw-up a much more comprehensive business plan. Although his current field of study is in public policy, Edward is concentrating on trade and industrial policy and therefore understanding the complexities when it comes to what you need to know before starting a business and how to even find new markets will be an added knowledge to help him become a better policy analyst in the trade and industrial sector.

Based on the knowledge and experience gained during the program, Edward hopes the KDI School's Business Start-up Program will be sustained for the benefit of the student community in KDI School. He highly states it has been very useful. THE GLOBE

Start Mapping out Your Future with Career Development Lecture Series

External Relations and Development Division



To encourage students to take ownership of their career direction, KDI School has been working with employers, recruiters, and alumni to cultivate new and exciting career opportunities to support and assist the students with their career endeavors every step of the way. In this light, Career Development Lecture series (CDL) was continued this year with the help of the KDI School alumni and support from the students.

This is your moment to shine – tips for great job interviews

Interviews are probably the most significant part of the internship and job/post-graduate search processes. To help students better understand the format, structure and technique of the interview, the first CDL of 2017 was conducted by the KDI School alumna **Ms. Yeon-kyoung KIM (2012 MDP)** who works as an international master of ceremonies. On March 8, based on her rich amount of public speaking experiences, Ms. KIM provided practical interview tips which can be used during real interviews.

The lecture focused on how to prepare for English interviews conducted by foreign companies in and outside Korea. Because foreign companies and Korean companies adopt different

employment process and require different interview skillsets, she emphasized the importance of building special strategies for each case. She also highlighted some of the job interview etiquettes to impress the interviewers.

Students were attracted to Ms. KIM's own know-hows based on her extensive career path and life story. She advised students to not feel frustrated during the job hunting process as everyone will be able to achieve what they want once they overcome the difficulties at present. CDL with Ms. KIM was indeed full of encouragements and warmth for all students.

Pursue your academic interests – how to enter national research centers and institutes

For those who believe that innovation and knowledge can solve some of the world's most critical challenges, working for a research center might be the perfect opportunity. On March 29, KDI School alumna **Ms. Joon-mi KANG (2014 MPP)** led the 2nd CDL of this year and shared her story of working for the Korea Development Institute (KDI).

Ms. KANG currently works for the KDI, Center for Regulatory Studies, where she administered the Joint Research between the

KDI and the OECD on Improving Regulatory Governance, drafted answers to the questions from Regulatory Policy Review of Korea provided by the OECD, was appointed by the Deputy Minister of the Office for Government Policy Coordination, and many more. She told the students how studying at KDI School where she obtained her Master of Public Policy with concentrations in Trade and Industrial Policy & Regional Development and Environmental Policy shaped her career path. Tips on applying and entering national research and development institutes, including the KDI, like actively networking with professors and selecting courses that match one's professional needs, were shared. Students who participated responded that they could relate to her story very easily as Ms. KANG is an alumna and therefore understands general concerns that students at KDI School have, and because she provided practical information about being a researcher, such as the amount of income and the recruiting process.

Experience in working for international organizations based in Korea: Perspective of UNESCO

On April 13, the third CDL was conducted by **Mr. Rigoberto D. BANTA Jr (2014 MDP)** who currently works at Asia-Pacific Centre of Education for International Understanding under the auspices of UNESCO (APCEIU) as an Assistant Programme Specialist.

He started his lecture by introducing APCIEU and the roles that each organization within APCIEU carries out. He strongly suggested the students, should they wish to work for the education sector, that they apply to UNESCO, as more than 70% of the UNESCO budget is invested in the education area. He stressed that the applicants should have a clear picture of what they can contribute to the organization as well as the world in the field of education, and work towards their goals step by step. Also, UNESCO values the following three things: 1) the Cognitive, 2) the Socio-emotional, and 3) the Behavioral, and therefore places more importance on emotional activities rather than simple accumulation of knowledge.

Students, both domestic and international, found the lecture very informative as their interests in working for an international

organization as well as applying for one were well reflected through Mr. BANTA's talk.

Building a better working world – Why EY?

On April 19, **Ms. Esther HWANG (2012 MDP)** visited KDI School to deliver a special CDL entitled “Why EY?”. Ms. HWANG, who is currently working at Ernst & Young Han Young (EY) as a Consultant in Advisory Risk, Climate Change and Sustainability Services, has rich work experience acquired from different organizations with different capacities in the field of research in and outside Korea. Before joining EY in 2016, Ms. HWANG did her graduate studies at KDI School and KU Leuven University where she obtained her dual Master's degrees in Development Policy concentrating on Public Finance and Social Policy as well as European Politics and Policies.

Introducing EY as the highest performing team with exceptional client service and outstanding global network, she explained what EY and its projects are all about. She used one of the projects she works for “The Development of Eco-industrial Park Technical Guidelines in Vietnam” as an example of many consulting projects she takes part in. Students who participated in this lecture were highly satisfied because they could be exposed to recruiting process as well as work life in a private company, and could learn which field of study they should focus while they are at KDI School. Ms. HWANG especially stressed that students must participate in debates and discussions held at KDI School, as negotiation skills are essential what at a consulting firm. THE GLOBE



Campus Life

28

2017 Spring Hiking to
Mount Gyejok



30

Dialogue
with the Dean

32

Clubs Empowering
Students at KDI School

34

The African Development Forum:
A dynamic platform for future leaders to be a
united voice for Africa



36

Knowledge Sharing and Collaboration
with the World Bank
Life in the diverse KDI School community

38

KDI School,
a gateway to improved
competence around the world

40

KDI School intensifies programs
for gender sensitivity on campus



42

GMP students leave their
mark in KDI School
with Kimchi and so much more

44

KDI School
—A green campus that cares
about tomorrow

2017 Spring Hiking to Mount Gyejok

Tracy Amanda SMITH (2017 MPP, Guyana)



As with every year, KDI School holds one of its biggest school events, Spring Hiking. This year students gathered on April 14 to hike Mount Gyejok to share memories of the spring semester and also as a way of relaxing just before the reading week in preparation for the end of semester. The day began with the students all in high spirits to experience hiking – some for the first time.

KDI School is known for ensuring that the students are well involved with the culture in Korea and this year was no exception on the trail. The School held a competition in celebration of its 20th anniversary where the students had to take a photo and video with their respective hiking group and were asked to simply depict the “The KDI School that I want.” This was done with an expectation of prizes that students could win: first place and second place, a gift certificate of Café Vobiscum worth KRW 100,000 for one team and KRW 50,000 for two teams respectively.

The hiking event aimed to bring the students and staff of KDI School together as a form of capacity building and gave everyone an opportunity to not only meet new people but also enjoy the fresh air and



full blown of spring with a breath taking view at the top of the mountain. Once at the peak of the mountain, everyone was treated to chocolate medals as prizes for completing the hike, a casual lunch where many laughs were shared and some games.

On the hike down, students gathered at a close restaurant to have a meal before departing to campus. It was a day well spent. One student opined, “It was truly a moment to relax and meet new friends from KDI School. I will certainly cherish the good memories and opportunities KDI School has offered me.” THE GLOBE



Photo credits: Edward Bruce-Lyle and Jawad Kia.

Dialogue with the Dean

Rosa DALITUICAMA (2017 MDP, Fiji)



“KDI School needs to communicate better with Korean embassies in partner countries.”

This was one of the concerns raised at the first 2017 Dialogue with the Dean for Global Ambassador Scholarships, Colombo Plan, G20/Global Leaders Fellowship, and Ph.D. students held at Lincoln Hall.

The Dialogue with the Dean were held 5 times from March 27 to April 8, targeting various groups of students. They aimed to facilitate a close interaction between the administrators and the students.

Student Lambert MBEINTA (2017 MPP) shared that there were difficulties convincing the Korean Embassy in his home country of Cameroon of the scholarship offer adding he was told that the documents provided by him were insufficient.

“I don’t know if other students faced the same thing but I feel that more needs to be done by KDI School to ensure that future students don’t face the same situation,” he said.

KDI School Dean Professor Hong Tack CHUN welcomed new students saying it would be a challenging year.

“I know the first semester here is especially difficult for new students because you need to adjust to a new environment and a new school in a foreign country. You need not only to study but

also to take care of yourself,” he said.

Dean CHUN was joined by Associate Dean’s Professor Jaeun SHIN, Professor Man CHO and MDP Chair Professor Dong-Young KIM.

In addressing MBEINTA’s concerns, Associate Dean Man CHO said he would discuss the issue further with the Admissions Office and find a possible solution to the problem.

Another Spring Student Heather Antonia DAVIS (2017 MPM) requested the School to explore the possibility of crediting the Korean Language and Culture Level 2 course, saying there was a lot of interest shown by students for it however it earned them no credit points.

“I see that course as an investment of Korean Language and Culture in the lives of international students. But you do not want to not do the course just because it’s not credited. I understand the importance they’re placing on the academic courses but I think that is also a very important part of the program,” she said.

To this, Associate Dean Professor SHIN said it was a valid point and they would look into the issue further.

The Dialogue with the Dean is held once every semester to address issues and concerns raised by new students and to assist KDI School to understand its students better. THE GLOBE

Clubs Empowering Students at KDI School

Valentin CROITORU (2017 MDP, Moldova)



In order to ensure that new students accommodate with their new setting as soon as possible, KDI School promotes the creation of student clubs and forums, where they can share interests, culture or a cause. To this purpose, the school offers students its well-established infrastructures for meetings and financial resources to encourage frequent activities. The clubs not only help students in the short run but can as well become a starting point for ideas, business plans, civil society organizations, citizenship groups, and charities. We have reached out to some of the Clubs present on campus and interviewed their representatives on how they believe their clubs can make KDI School a better place.



Lidice Nahomi GONZALEZ (2017 MPM) is the representative of the KDIS Yoga and Fit Club. The club holds practice sessions every week throughout the whole year.

Tell us about your club and how it helps students.

“Some people believe that Yoga is either a series of stretches and breathing exercises or that it is just about relaxing. Believe me, it’s not! Yoga is more than that. Your mind has a big play in the practice. I’ve heard so many times people tell me that they will never be able to do a pose or reach their toes in a forward bend, and after just one week they all improve so much. Your body really appreciates this practice and it forces you to be present in the moment (that’s why the mind is the key), this is very important for us while being in KDI School. We get overburdened by so much work that we get anxious, yoga helps you manage your emotions and focus.” If yoga is not your cup of tea you can indulge in football, tennis or volleyball. The clubs organize regular games on the campus sports field. One of their goals is to train at least several people not familiar with the sport and or-



ganize matches with other universities as well as amongst the KDI School students. **Daniel KACHALE (2016 MDP)**, representative of the volleyball club, told us that in line with the objectives of the club, the activities are aimed at creating a platform for international students, with different cultures and religious backgrounds to interact through sporting activities.

Share with us a brief story of how a past activity of their club managed to empower a student.

“The club was able to train a female student from the Dominican Republic who had never played volleyball before. As of now, the student is able to help other new entrants, especially other females, interested in volleyball on campus. It is expected that she will also be an ambassador of the sport in her respective community back in her home country. In addition, she will use her status and the sport to outreach to female youth in her community.”

Culture and religion are essential to students. KDI School ensures that no one is denied the right to practice his own beliefs and convic-

tions. We asked **Rizki Harit MAULANA (2016 MPP)**, the representative of the Muslim Community Club.

What opportunities does the club offer to its members?

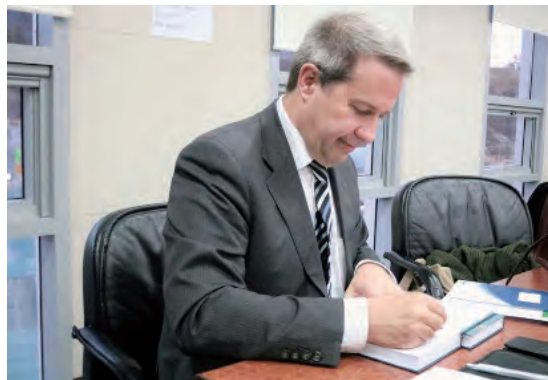
“Most activities in the Muslim Community Club consist of presentations by our members regarding Islamic culture and practices in their home countries. During Ramadan month (which will occur in summer this year), we are planning to conduct night prayer and iftar (eat evening meal after fasting) together. Also, every now and then we will play and discuss movies with Islamic theme, and organize charity fundraising. The most recent presentation was performed by Hamad Bakar SAID (2016 MPP) from Tanzania. His presentation titled “Islam and Culture in Tanzania” was received with applause from the audience.” The KDI School clubs create numerous intangible benefits for the institution, including ties to the community, fostering a sense of belonging for students – and much more. The clubs achieve these qualities naturally, and without the need for expensive programs. THE GLOBE



The African Development Forum:

A dynamic platform for future leaders to be a united voice for Africa

Tracy Amanda SMITH (2017 MPP, Guyana)



The first meeting of the KDI School African Development Forum (ADF) for 2017 welcomed students from 20 countries along with **Dr. Stephen KLINGEBIEL**, the Head of Department at the German Development Institute and co-author of “The Fragmentation of Aid: Concepts, Measurements and Implications for Development Cooperation.” Dr. KLINGEBIEL’s attendance at the forum was made possible through the friendly relationship between the forum and the UNDP Seoul Policy Centre. **Ms. Eddah DUNCAN**, the serving president of the Forum, opened discussions by giving a basic overview of the forum’s purpose, objectives and

highlighting the past achievements and upcoming events. She ended her presentation on a note of encouragement to new students being involved in the forum’s discussions.

Mrs. June KIM from the Student Affairs Division, who is in charge of various student forums on the school’s campus, expressed gratitude towards Dr. KLINGEBIEL for making a presentation at the first spring semester meeting of the ADF forum. She indicated that his presence and support of the UNDP Seoul Policy Centre was greatly valued by the School and expressed that, “the ADF is one of the most active forums on KDI School.” She encouraged that with continued policy discussions the forum will only grow to add to the students’ knowledge of Africa’s Development, thus creating specialists in this area.

Dr. KLINGEBIEL’s presentation focused on the Fragmentation of Aid – a topic based on a book he co-authored and recently launched. He explored the way in how aid was delivered in Africa and drives the propensity to give aid. In his discussions, he address the political atmosphere of aid and what it means when one speaks of donor interested and the implications for recipient countries. With a fulfilling discussion with the forum, Dr. KLINGEBIEL concluded his discussion by presenting two copies of his book on Fragmentation of Aid to the ADF and KDI School.

The book is based on ideas generated in an international academic conference organized by the



German Development Institute in 2013. The book comprises of four main topics covering measurement of fragmentation, drivers and actors of fragmentation, consequences and impacts of fragmentation and policies to address fragmentation.

The ADF is a social platform of KDI School that aims to bring students, especially of African origin studying at KDI School together to discuss, share and promote awareness of the various socio-economic, cultural, political, institutional or environmental development issues confronting Africa’s development. The forum’s aim is to develop leaders and experts from KDI with a vision of integrating Africa through discussion and visionary policy making. KDI School supports this forum, among others, by working with other experts to facilitate discussions with its members in the hopes of nurturing future visionaries. THE GLOBE

Photo credits are to Mr. Edward Bruce Lyle.



Knowledge Sharing and Collaboration with the World Bank

Life in the diverse KDI School community

Valentin CROITORU (2017 MDP, Moldova)

Lucia Nathali Salazar MEDINA (2016 MPP, Guatemala)

KDI School collaborates with universities, institutions, and governments from around the world in order to provide its students with the best opportunities for future success. One of its strategic partners is the World Bank with whom several events are organized each year. The purpose of the common exercises between KDI School and the WB are systematic and effective knowledge sharing. These exercises expose KDI School students to various comprehensive development frameworks and lessons on how to implement them effectively. Both institutions strive to reduce the knowledge gap between advanced countries and developing countries.

On March 10, the World Bank Group Korea Office offered KDI School students an opportunity to attend a special event. The conference was mainly aimed at reporting the main findings of WB Doing Business 2017 and reflecting on how the Doing Business Report continues to provide objective measures of business regulations affecting local firms in 190 economies. In addition, the event included key speakers from success stories including New Zealand which topped this year's ranking and Rwanda which has continued to make impressive strides in improving its ranking.



The event was held at the Seoul Plaza Hotel and included different stakeholders such as business leaders, government representatives and professionals in the field of academia and media. Both speakers and guests shared their experiences and opinions. One of those attending the event was KDIS student **Daniel Thanthwe KACHALE (2016 MDP)** whom we interviewed.

Q What is the main reason that motivated you to attend the World Bank Conference?

A One of the reasons that interested me regarding the event was wanting to get a clarification on how the World Bank develops the indicators and scores used in the annual doing business report. I wanted to get a sense of the main criteria on how the current 11 indicators used are selected and how they update their methodology in order to keep up with the most recent developments. Also, New Zealand had extraordinary developments recently and is now number one on the 2017 World Bank Doing Business index. Knowing that her Excellency, the Ambassador of NZ would be attending, I wanted to hear what she believes are the main policies that have helped the country make such strides. Rwanda is another great example, ranked number one in the DB index of countries on the African continent. The recommendations from the ambassador of Rwanda would be of even more importance as both our countries share many similarities.

Q What was the main advantage of attending the event?

A The main advantage was that I was able to network with government officials, academia and the private sector from Korea and other countries represented at the forum. Also, meeting the co-authors of the World Bank doing business report and being able to ask them questions was a huge advantage by itself. Finally, drawing up policy recommendation for my own country based on the presentations and discussions conducted was another great advantage of this event.

Q Would you recommend organizing more of these events?

A Yes, I would absolutely recommend it. I hope this kind of event will be organized more frequently and find it to be very useful for master's degree students. Apart from the theoretical knowledge, we gain during classes at KDI School, these forums and events provide more practical knowledge, and allow students to learn real examples of implementing good governance practices. They provide applied insights on policy related issues.

Q If you could invite other KDI School students to attend such events, what would you say?

A I would greatly recommend students to attend this kind of workshops. I would tell them that this is an essential part of their studies and the added value of such events is colossal.

Q What was your most memorable experience during the event?

A During the questions and answers session, we were able to flag out some policies we always questioned in our countries. Hearing a second opinion, from both WB staff as well as the private sector, academia and Government representatives, provided a useful comparison of attitude towards issues that were discussed. These uncensored views helped me comprehend some of the aspects, related to our national policies, which are less frequently discussed and analysed.

Events like the one organized on March 10 provide the best platform for knowledge sharing. They allow those attending to reflect and discern the policies needed to improve their communities. Participants shared concrete problems and the speaker suggested tangible actions that can help redress them. Collaborations such as the one with the World Bank are essential for KDI School students, for they can translate knowledge gained through courses into strategies and policy objectives that can help their countries develop sustainably and effectively. ^{THE GLOBE}

KDI School, a gateway to improved competence around the world

Ranel Ram CHENG (2016 MPP, The Philippines)



Students of KDI School were able to capitalize on the opportunity to learn from the experts at the Statistics Training Institute and Statistics Korea in Daejeon on April 7, 2017 as a part of a site visit program. Special lectures were given on the areas of the Nara Statistics system and Nara-Pro by Mr. Chul Bae LEE; the statistical system and its implications by Mr. Bong Ho CHOI; and a presentation on the Statistics policy in Korea.

Speaking on how the Nara Statistics system and Nara Pro works in Korea, Mr. LEE expressed that the purpose of the statistics system was to establish a cooperative mechanism between government ministries with the use of generic statistical information system and producing transparent and reliable statistical information. He contended that it was important for a nation to have a national statistical agency so as to ensure government reliability in data thus, enhancing transparency. This idea is important to Korea and it is enshrined in their law as well as expressed in Article 7(2) of the Development and Operation of Statistical Information System. In this article it states that all officially approved statistics must be done using the Nara Statistical System. Mr. LEE informed the students that the vision for implementing these systems was to produce custom-tailored statistical information to achieve citizen's happiness.

Mr. LEE then went on to introduce the new NARA Pro as a statistics data collection and processing system that uses Graphic User Interface (GUI) configuration and support essential functions for statistical survey such as questionnaire design and research management. The main targets of the NARA Pro are government agencies, educational institutions especially universities and private enterprises. With the implementation of the NARA Pro system later this year it is expected that users would be able to easily install the software for personal user, and create statistics without formal training making it easier to formulate questionnaires.

The second speaker, Mr. CHOI spoke about the statistical system of Korea and its implications. Mr. CHOI stressed the importance of statistics to a nation and how there is an abundance of data that can easily make it difficult for anyone to understand. In order to help students understand his concepts, he opened by using the OECD definition to the term "statistical system" as the ensemble of statistical organizations within a country that jointly collect, process and



disseminate official statistics on behalf of the national government. He expressed that statistical systems are either centralized or de-centralized depending only on the extent of responsibility, and like any systems, there are both strengths and weaknesses to it.

The final presentation on the statistics policy of Korea was to inform the students that Korea performed its first population census in 1949 in order to measure the tax revenue as a primary ground for public administration and ever since, statistics and statistical systems were developed and utilized simultaneously with economic development in Korea. The students were also informed that Korea has adopted the decentralized statistical system where individual agencies can now produce statistical data. Students were also made aware of the workings of the national statistical database, KOSIS and MDSS (Micro Data Service System).

At the end of the discussion, the students of KDI School were well educated on the workings of the Statistics Korea office and their projects. Most importantly, the students understood why statistics is important to a nation and how Korea intends to implement big data's strategy to further produce quality statistical information that the society demanded. THE GLOBE

KDI School intensifies programs for gender sensitivity on campus

Ranel Ram CHENG (2016 MPP, The Philippines)



A truly diverse international community not only welcomes ideas from individuals coming from different parts of the world, but also strives to become a safe space for anyone regardless of gender, culture, or identity. This spring semester, the Student Affairs Division introduced changes in order to make the KDI School campus an even more inclusive community that protects its members.

All students, both old and new, are required to enroll in a special online course called “Understanding Sexual Harrasment” available through the e-Education website. The short course, which can be completed in less than an hour, is composed of mostly videos that tackle real-life issues such as online violence, the importance of consent, how to respond to harassment cases, among others.

The videos were developed by the Seoul National University Human Rights Center as materials for higher education institutions in Korea.

“We hope that, through this course, all members of the KDI School community can work together to build a culture in which no one is harassed because of his or her gender, sexual orientation, disability, nationality, social identity, and any other personal factors, and in which consideration and respect are practiced in everyday life,” reads the description to this online course.

Earlier in the semester, students also received by email a copy of the published Sexual Violence Prevention Guide which introduces Korean laws, as well as outlines how students can report such untoward incidents and how the School shall act on them.

This is in addition to the Cultural Awareness & Sexual Harassment Prevention Education talk held every Orientation and the Special Lecture on Sexual Violence Prevention offered last Fall semester.

A public hearing, composed of student representatives, was also held to get students’ inputs about the appropriateness of the anti-sexual harassment education videos that were eventually used for the online course.

Student Affairs Division Head Ms. Jae Soon LEE explains that these are all part of the School’s sincere follow up to questions raised during the Dialogue with the Dean held last October. Listening to suggestions from the students, she says that the School decided to take steps in improving education about this relevant issue.

“The School has no-tolerance policy for [sexual harassment on campus]... First priority is to make the students have a very sensitive attitude on these issues. It is not a Korean-only issue. It’s a worldwide issue on human rights and [gender-based violence],” Ms. LEE says, adding that she hopes that international students will also be able to apply gender sensitivity as they become future leaders in their respective countries.

Students can report any cases of sexual violence directly to the Student Affairs Head, Ms. LEE or email help@kdischool.ac.kr.

In addition, the School also offers counselling services for students with Professor Gina LEE, who can be reached through email counseling@kdischool.ac.kr.

GMP students leave their mark in KDI School with Kimchi and so much more

Ranel Ram CHENG (2016 MPP, The Philippines)



Students who enrolled in KDI School’s Global Master’s Program in 2016 have now been deployed to different corners of the globe to pursue further studies. But before they left, they made sure to leave their mark in the KDI School community through a series of programs held together with the KDI School Volunteering Club.

During the previous winter, a new batch of GMP students was gearing up for the international leg of their academic journey. But even while in the middle of their preparations to study abroad, they managed to take part in the School community in a rather unique way.

“We tried to contribute something to the school and students first and we thought that’s the way the GMP really practically contributes,” explained **Seunghyun (Lewis) KWON (2016 MDP)**, who served as the GMP Student Representative last Fall semester and is currently enrolled at the Rotterdam School of Management at Erasmus University in the Netherlands.

Last October, Mr. KWON and his fellow GMP students organized a flea market wherein they sold some pre-loved winter wear and accessories primarily for international students, some of whom would be experiencing the harsh winter cold for the very first time.

The GMP students were able to raise a significant amount from their flea market sales but instead of spending it on themselves, they decided to use the funds for a better

cause. Partnering with the KDI School Volunteering Club, the GMP students held a kimchi-making event to prepare several batches of Korea’s representative dish for a local orphanage in Daejeon.

“We wanted to make an event to influence the international students. Because of the season, it was the right season to make kimchi here in Korea so we invited a “kimchi master” from the GMP students. One more purpose was not just consuming the kimchi for ourselves but also contributing to one orphanage in Daejeon area, that was already involved with the Volunteering Club members,” Mr. KWON shared.

Interestingly, all these projects were not 100% planned beforehand. Mr. KWON says that the GMP students simply wanted to be more involved with the School community. Even though they were busy juggling their schoolwork and the logistics for their study abroad, they were able to share something to their international classmates, teach them about Korean culture, and be a blessing to the local community.



“Hearing from our past GMP student representatives, we thought that GMP students are a bit separated from the rest of the international students... While doing this, we felt that we are part of the students and not only just obtaining something from the school or the other classmates. We are really doing some contribution to others so we feel more energetic now and we felt that we can also do something for the school,” Mr. KWON adds.

In addition, these simple activities managed to forge a unique bond between the Korean students and the international students that make up the overall KDI School community. Not only that, the events also brought out a simple yet concrete example of what international cooperation can offer.

“Our GMP students kindly suggested they prepare most of the parts themselves and we would just help find the orphanage where we could donate our kimchi to. So basically that’s how our collaboration started. They cooked the kimchi and we helped deliver,” shared **Saltanat ZHUMAKALJI (2016 MDP)** from Kyrgyzstan and a member of the Volunteering Club.

Indeed, KDI School can pride itself for producing scholars who not only learn about international development and cooperation, but also try their best to live by the idea of making a difference even during their brief stay on campus. Who would have thought that making kimchi could bring out all these? THE GLOBE



KDI School

– A green campus that cares about tomorrow

Valentin CROITORU (2017 MDP, Moldova)



Universities are usually regarded as energy-guzzling places. In South Korea, however, representatives of several academic institutions vowed to fulfill their social responsibility by carrying out the green campus campaign to join in efforts to cope with climate change and pursue sustainable development through gradual greenhouse gas reduction, dedicated practices to improve recycling, and prioritization of energy saving.

Especially at KDI School, environmental awareness is a main concern. The School has been cooperating closely with Sejong City as the city set its ambition to subsidize 9.5% (cf. 3.52% of the national level, 2013) of the energy consumption with renewable energy by 2020 and aspires to be one of the most green cities in the nation. The institution utilizes solar panels on the rooftop of buildings and in the parking lot, and uses a geothermal underfloor heating system. Those that lead the way are the students themselves that sort all of the waste they produce for recycling purposes.

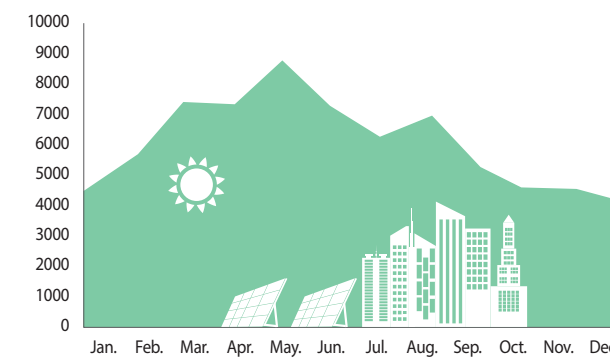
Solar Panels

With the Paris Agreement now in force, the trend is to invest in renewable and clean energy sources, with photovoltaics as the most natural choice, to replace non-renewable energy sources and to keep promises made in Paris. Photovoltaics panels rely on the conversion of light into electricity using semiconducting materials that exhibit the photovoltaic effect. When light energy strikes the solar cell, electrons are knocked loose from the atoms in the semiconductor material. If electrical conductors are attached to the positive and negative sides, forming an electrical circuit, the electrons can be captured in the form of an electric current.

In 2013, KDI spent close to 400 million KRW to purchase solar panels from a Korean company based in Seoul and founded in 1974, LSIS Co., Ltd. Panels from the school parking lot have a width of 46.3m, and height of 5.3m and the panels on the rooftops have a width of 20.8m and height of 5.7m. The panels require little to no maintenance costs



and the School employs just one electrical safety manager. Since the completion of the construction, the cumulative amount of electricity produced by the panels equals to 2431[MWh]. Because the electric price for the institution is 1[KWh]=130 KRW, the total amount of electric charges for the electricity produced from the School equals to 316 million KRW. It is expected to take another 4 to 5 years until the break-even point is reached and the benefit of the panels will outweigh their initial cost.



*Electricity produced by solar panels in 2016 by month in Kwh

KDI School consumed 2,441,508 KWh in 2016 and the solar panels produced 72,913KWh. However, the electricity produced by the panels is being sold back to the Korea Electric Power Corporation (KEPCO) to get a reduction in price for the monthly electric bill.

Geothermal Underfloor Heating

Geothermal underfloor heating is a system employing the use of underfloor piping to heat the Korean Development

Institute. Water is pumped through the pipe network, utilizing the constant temperatures of the earth to cool heat the fluid. There are 102 borehole pipes installed at a depth of 108 meters below the ground. Their function is not to provide heating but to regulate the temperatures of the equipment used for heating and cooling. There are many advantages to using this system. First, the system requires very little energy to function and maintenance is very low, which means that energy costs, as well as maintenance costs, will be very low. The geothermal underfloor heating system was installed in accordance with the government policy requiring the adoption of new and renewable energies, which outlines a target to have 11 percent of the energy supply generated by new and renewable means, including solar power as well as geothermal underfloor heating.

There are as well other ways that KDI School promotes sustainability and environmental awareness. Educating and ensuring that students recycle the waste they produce whilst on campus is common for most developed nations. Another endeavor is less obvious but not less important and is related to the fountain and waterfall on campus, which use collected rainwater and only in very rare cases of low rainfall is the regular water supply used. Converting to sustainable practices demands real systemic and cultural change. While many share a fear of change, KDI School is determined on educating forward thinkers that will continue in their professional career ensuring development without sacrificing the environment. ^{THE GLOBE}

Alumni News & School Updates



The Glo-Book Campaign

The GLOBE continues on with its new Glo-Book Campaign.
For the third leg, we've selected a book recommended by KDI School Professor Cheol LIU.



Title: <Better> A Surgeon's Notes on Performance
Author(s): Atul GAWANDE
Publication year: 2008
Publisher: Profile Books
ISBN: 1861976577

Summary: In his new book, Atul Gawande explores how doctors strive to close the gap between best intentions and best performance in the face of obstacles that sometimes seem insurmountable. His vivid stories take us to battlefield surgical tents in Iraq, to a polio outbreak in India and to malpractice courtrooms around the country (Amazon.com, 2017).

48

KDI School student and alumnus
awarded for MBN Economic
Research Paper Competition &
the Ten Outstanding
Young People of Colombia

49

Alumni Gatherings

50

Alumni News Update

52

New Faculty and Staff Updates

54

We Shape the Globe



KDI School student and alumnus awarded for MBN Economic Research Paper Competition & the Ten Outstanding Young People of Colombia

Ranel Ram CHENG (2016 MPP, The Philippines)



Congratulations! Mr. Hyungjung KIM, who is currently enrolled at KDI School to obtain his master's in Development Policy, has won the first place in the Economic Research Paper Competition held by the Maeil Business Newspaper. His paper titled "Does Higher Education in Korea Matter? The Effect of Tertiary Education on Labor Market Performance and Wage" explores the factors that affect high unemployment problem among youth in South Korea by looking into the trends of both the economically active and inactive population in the last ten years, and focuses on the mismatch between the field of study in college and the actual duties at workplace.

Director of Promotion and Marketing of the District Institute of Tourism and a professor in the Master of Management for Development at the Faculty of Finance, Government and International Relations of the Externado University of Colombia. The recognition of the Ten Outstanding Young People of the World has been present in Colombia for 45 years, to formally recognize young people who excel in their chosen fields and exemplify the best attributes of the Colombian young people.

Again, congratulations on your achievement! THE GLOBE



Another great news is that Mr. Jose andres Duarte GARCIA, a KDI School alumnus who completed his MDP in 2015 has been nominated as one of the Ten Outstanding Young People (TYOP) of Colombia. Mr. DUARTE GARCIA is currently the Deputy

Alumni Gatherings

A number of KDI School alumni members continue to gather around the world. Since December 2016, 8 alumni gatherings took place – Maldives, Cote d'Ivoire, Lithuania, Rwanda, Myanmar, Sri Lanka, Laos and Korea (2015 GMP). Especially on April 22, 2017, the 2015 GMP Alumni from Korea gathered to celebrate the donation ceremony of a beautiful bench.

With these alumni gatherings, KDI School is committed to maintaining a close-knit alumni network all over the world.



Maldives (December 19, 2016)



Cote d'Ivoire (December 21, 2016)



Myanmar (February 1, 2017)



Lithuania (February 6, 2017)



Rwanda (February 7, 2017)



Sri Lanka (March 21, 2017)



Laos (April 6, 2017)



Korea (April 22, 2017)

Alumni News Update



Byeongzu AHN

2007 MPP, Republic of Korea
BYEONGZU AHN was promoted to the Vice Bureau-Chief-Grade Official of Saemangeum Development and Investment Agency, under Ministry of Strategy and Finance.



Youn Soo BAE

2006 MPP, Republic of Korea
Youn Soo BAE has been transferred to Settlement Support Center for North Korean Refugees (Hanawon)-Hwacheon branch of Ministry of Unification.



Jang Hoon LEE

2004 MPP, Republic of Korea
Jang Hoon LEE was appointed as the Secretary-General at The Sisters of Mary Foundation.



Myung Keun LEE

2008 GLP, Republic of Korea
Myung Keun LEE was promoted to the head of Corporate Actions Department at Korea Securities Depository.



Sung-Jae CHOE

2006 MBA, Republic of Korea
Sung-Jae CHOE was promoted to the Director of Global Business Division at Industrial Bank of Korea.



Anaïs Gabriela FAURE DE PAZ

2012 MDP
FAURE DE PAZ recently published an article in The Diplomat Magazine titled “The New Trans-Pacific Partnership.”



Yisehak Teka NIBERE

2014 MDP, Ethiopia
Yisehak Teka NIBERE was promoted to Compliance Management Manager of the Dashen Bank, and had a new son.



Dipan Kumar SAHU

2015 MDP, India
SAHU has co-authored a case study titled “Training Leby-Rebate Incentive Scheme and SME Training Consortium Program to Address Unemployment and Low Productivity in SMEs - A Korean Policy Case.”



Meoung-Gi JANG

2011 MPP, Republic of Korea
Meoung-Gi JANG was promoted to the Deputy Director of Tax Division at Daegu Metropolitan City.



Soowoong JIN

2014 MDP, Republic of Korea
Soowoong JIN was promoted to the Secretary of Overseas Marketing Division at Small & Medium Business Administration.



Naeem TUFAIL

2006 MPP, Pakistan
Naeem TUFAIL established an institute for training and research, MITEC. He is working as a CEO of MITEC and the President of an NGO, MAHOLE.



Jiangtian XU

2011 MPP/PM, China
Jiangtian XU was awarded the title of UACES (University Association of Contemporary European Studies in London) Scholar and Scholarship for his field research in ASEAN.



Chang Hyun JO

2004 MBA, Republic of Korea
Chang Hyun JO rejoined Amrop (HQ in Belgium), or one of the world’s largest top 10 retained executive search firms as a Partner.



Yun Su KANG

2011 MPP, Republic of Korea
Yun Su KANG was promoted to the Vice Bureau-Chief-Grade Official of Policy Planning Division at Ministry of Unification.



Young-Jin YEON

1998 MPP, Republic of Korea
Young-Jin YEON was appointed as the Head of Korea Institute of Marine Science & Technology Promotion.



Sung-kwon YOON

2006 MBA, Republic of Korea
Sung-kwon YOON was promoted to the Vice Bureau-Chief-Grade Official of Bid Rigging Investigation Division at Korea Fair Trade Commission.



Jun-Ha KIM

2001 MPP, Republic of Korea
Jun-Ha KIM was promoted to the Director at Fair Trade Commission.



Myeong Joo KIM

2001 MPP, Republic of Korea
Myeong Joo KIM was promoted to the Vice Bureau-Chief-Grade Official at Ministry of Strategy and Finance.



Hyoung-Kwon KO

2012 MPP, Republic of Korea
Hyoung-Kwon KO was appointed as the Director at Asian Development Bank.



Cheong Woo LEE

2010 GLP, Republic of Korea
Cheong Woo LEE was promoted to the team leader of Fund Support Team at Korea Securities Depository.



Falastin NOUBANI

2016 MPP, Palestine
Falastin NOUBANI is working on a project “Protect my right” for children especially in conflict areas as a project coordinator in the Palestinian Center for Democracy and Conflict Resolution.

New Faculty and Staff Updates

Faculty updates



Dongseok KIM

Professor Dongseok KIM received his Ph.D. in Economics from Stanford University. A long-time member of KDI, Professor KIM is an expert in Econometric Analysis and has served as senior vice president at KDI School from 2013. As the recognition for his efforts on research and studies, Professor KIM won the Order of Industrial Service Merit (Tin Tower) from Korea’s Ministry of Trade. The Professor also holds several positions as a committee member at Auditing and Advisory Committee and Research and Development Special Zone Committee. The professor is expected to teach Productivity and Growth and Input-Output Analysis.



Hyeon-Wook KIM

Professor Hyeon-Wook KIM received his Ph.D. in Economics from Columbia University. His research area includes international banking and finance and macroeconomic policies. This is the first year of teaching at KDI School even though he was a research fellow at the KDI for a quite long time. Professor KIM has worked as a director in Economic Research Office of SK Research Institute for SUPLEX Management for the last six years.



Suil LEE

Professor Suil LEE received his Ph.D. in Economics from University of Wisconsin-Madison. His research area includes industrial organization, law & economics, and regulation and competition policy. Professor LEE also has prior experience teaching at KDI School of Public Policy and Management in 2014. The Professor was a Research Fellow at the Department of competition policy at KDI for almost a decade, and has also served as an executive director on the Center for Regulatory Studies at KDI. Professor LEE received the Civil Merit Medal last year.



Christopher PLUMB

Professor Christopher PLUMB received his Ph.D. in Museology from the University of Manchester. He also has a prior experience of teaching English in Korea. For the last five years, he has taught writing class and speaking class in Cyber Hankuk University of Foreign Studies. Professor PLUMB is expected to teach academic writing at KDI School.

Staff updates



Ji-Yoon HONG

Hello, everyone. It’s a big pleasure for me to join this diverse community filled with passion and togetherness. I will do my very best as a member of the External Relations & Development Division to better serve the students. Again, I’m happy to be on board and hope to get to know each and everyone here at KDI School!



Suah KIM

Hello, Nice to meet you all! I’m Suah Kim from e-Learning team and making online videos for studies. Some of you may have seen me recording lectures. I’m really happy to work with great faculties, staffs, and students at KDI School and I’ll do my best. Thank you!



Sujeong KIM

It is my great honor to meet you all at KDI School. I am very happy to start working at the Capacity Building Center as I believe that we can make a better world together by learning and sharing knowledge and experience. I will do my best to contribute to the School and even further, world peace as well. Thank you.



Jihye LEE

I’m glad to have met all of the KDI School family. I consider it a deep honor to work here as a librarian, and I look forward to having some delightful memories here. I will try to be a passionate supporter of the KDI School.



Hae Young OH

Hello My name is haeyoung oh from the k-developedia team. It is pleasure to be here at KDI School. I hope to contribute positively to the school and the students of KDI School. Thank you



Bo Ram SHIN

Hello! This is Boram Shin from the administrative division. It’s my pleasure to be here at KDI School. I have worked here for a year and have been learning many things. I’m sure about that it will be a valuable experience to me. I will keep trying my best. Thank you!



Boeun SUONG

Hello, my name is Boeun Suong and I’m a member of Student Affairs Division. I’m glad to introduce myself through the ‘Globe’. Since I have worked in this place, KDI School becomes a turning point of my life. I believe all the KDI School community are of a mind with me. Hope to see you around! Thank you.

We Shape the Globe



Valentin CROITORU 2017 MDP, Moldova

KDIS as we know it and live it, is an educationally, socially and culturally formative experience – it's a truly remarkable place. It offers a platform for future leaders, pioneers, change-makers, workers and dreamers to grow, to question, to learn and to flourish. The constructs of the curriculum do not allow us to be everywhere at all times, so I've decided to help students learn about the events and stories that they could have missed during the busy semester. I embrace a mission to educate readers and to share the hidden treasures of our community.

Rosa DALITUICAMA 2017 MDP, Fiji

2017 will be the year of opportunities and what better place to challenge yourself than KDI School. Since enrolling as an MDP student in January, I have been blessed with the opportunity to meet students from all corners of the globe, each with their own story. KDIS has introduced me to students from countries I would otherwise have not known existed. But what unites us is the passion to help our own countries and Korea has a lot to offer in this area. In my journey with The Globe, I have been inspired to share stories of students from various parts of the world that may not necessarily share the same freedoms as others but who made the decision to be at KDIS out of love for their country. I wish our students all the best for the 2017 academic year and beyond and as we learn from some of Korea's renowned policy makers, let's live to become visionary frontiers of our own national agendas.



Tracy Amanda SMITH 2017 MPP, Guyana

We shape the globe by keeping you informed. Working for The Globe was an absolute adventure! What an experience coming all the way to South Korea and just throwing myself out there to learn as much as I can by doing new things. Wearing a new hat as a writer, I am honoured to have met such lovely people throughout my journey with the publication - from the interview for the job all the way to doing interviews for my stories. I am sure the professional relationships I was able to foster through The Globe will be forever and I look forward to continuous collaboration. I have a new found passion for writing and telling a story.

Lucia Nathali Salazar MEDINA 2016 MPP, Guatemala

This is year KDI is celebrating! So, first I would like to congratulate KDI School on its 20th anniversary. Previous semester KDI students had the chance to experience the transition from winter to spring, a season full of flowers and nice weather. Just as seasons, many students will soon make a transition from KDI and I would like to take this chance to wish them a road where challenges turn into opportunities and opportunities into great lifetime experiences.



Ranel Ram CHENG 2016 MPP, The Philippines

This Spring, THE GLOBE team offers a new take on the events around campus and here in Sejong City. We are excited to cover the events of the 20th anniversary of the school. At the same time, we are proud to write about the achievements of our fellow students, alumni, and professors who continue to make their mark all over the world. In line with the hopeful mood of the spring season, I look forward to all the exciting stories we will be covering in the year ahead.



Disclaimer: all photographs used in The Globe were taken by KDI School students, alumni, faculty, and staff.