



**Korean Development Institute (KDI)-
Rutgers Edward J. Bloustein School (EJB)**

Scholars Program

**Presentation by: Dr. Lynn Astorga
Director of Adjunct Faculty and
Director of Graduate Student Recruitment**



JOIN US NEXT SPRING!

- Obtain a Master of City and Regional Studies (MCRS) or Master of Public Affairs and Politics (MPAP) in 1 year
- Live near New York, Philadelphia, Washington DC and Boston
- Experience the American Melting Pot



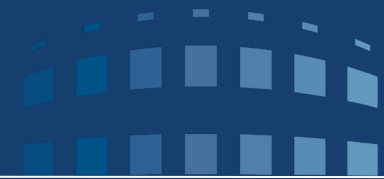


Located in New Brunswick, Rutgers University is the 8th oldest college in the United States (founded in 1766).



Rutgers – 1 University, 3 Campuses in 1 State





Great Location & Easy Accessibility

- Easy travel by mass transit to popular American Cities!
- 50 mins to New York City
- 75 mins to Philadelphia
- Frequent express bus and train service to Boston (4 hrs) and Washington, D.C. (3 hrs)
- Close to 4 international airports (EWR, JFK, LAG, PHL)





The Edward J. Bloustein School of Planning and Public Policy



- **Policy and Planning Programs both ranked #3 in US!**
- State of the art equipment and facilities
- Host to 17 nationally recognized research centers and collaborative institutes.
- 300 graduate students from across the United States and from around the world



An Excellent Opportunity!

- Graduate with a Public Policy master's or Urban Planning master's degree in 1 year
- Highly ranked school
 - #3 Urban Planning master's program (Planetizen.com)
 - #3 Public Policy master's program (GraduatePrograms.com)
- Elective courses now available in data analytics and informatics (from our Master of Public Informatics program).
- Affordable tuition costs as a public university compared to private universities which are more expensive.
- Free English language training also available for spouses.
- NJ climate is similar to South Korea





Master of City and Regional Studies (MCRS)

One year program, 30 credits

Core Courses (12 credits)

History and Theory of Planning, Urban Economy and Spatial Patterns, Basic Quantitative Methods, Planning Methods (Planning Methods and additional methods course for most KDI students)

Concentration Electives (12 credits)

GIS, Physical Planning and Design, Housing, Real Estate, International Development, Regional Planning, Transportation, Finance, Economics, Environment, Methods, Non-Profits, Social Justice and Advocacy, Urban and Community Development, Public Informatics and Big Data

KDI Transfer Credits (6 credits)

May be elective or to replace a core requirement, upon approval by Program Director.



Master of Public Affairs and Politics (MPAP)

One year program, 30 credits

Core Courses (12 credits)

Public Policy Formation, Basic Quantitative Methods, Research Design, Economics for Public Policy

Concentrated Electives (12 credits)

May choose from elective courses in any of the following areas:
Budget and Finance, Economics, Education, Environment, Labor and Workforce, Management, Methods, Non-Profits, Political Processes, Social Justice and Advocacy, Social Policy, Urban and Community Development, Public Informatics

KDI Transfer Credits (6 credits)

May be elective or to replace a core requirement, upon approval by Program Director.



Sample Program of Study #1

January-May: Take 3 courses and English Training (9 credits)

June-August: Take 1 course (3 credits)

September-December: Take 4 courses, transfer in 2 from KDI
(12 credits)

Total: 30 credits (includes 6 credit transfer from KDI)

Sample Program of Study #2

January-May: Take 4 courses and English Training (12 credits)

June-August: Take 0 courses (0 credits)

September-December: Take 4 courses, transfer in 2 from KDI
(12 credits)

Total: 30 credits (includes 6 credit transfer from KDI)

2025 Academic Calendar



Event	2025-2026
Spring Semester Begins	Tue, January 21, 2025
Spring Recess Begins	Sat, March 15, 2025
Spring Recess Ends	Sun, March 23, 2025
Regular Classes End	Mon, May 5, 2025
Reading Days	Tue, May 6, 2025 Wed, May 7, 2025
Spring Exams Begin	Thu, May 8, 2025
Spring Exams End	Wed, May 14, 2025
Fall Semester Begins	Tue, September 2, 2025
Thanksgiving Recess	Thu, November 27 to Sun, November 30, 2025
Regular Classes End	Wed, December 10, 2025
Reading Days	Thu, December 11, 2025 Fri, December 12, 2025
Fall Exams Begin	Mon, December 15, 2025
Fall Exams End	Mon, December 22, 2025

KDI-EJB Scholar Program Benefits

- Professional Arrival and Orientation
 - Academic Advisor
- English language training for KDI Scholars
- Free English language training for spouses
- On campus single and family housing (costs are inclusive of rent and all utilities)
 - Good school district for children
 - World-renowned faculty
 - Master's Degree earned



Monmouth County, New Jersey



Delaware Water Gap, New Jersey



Long Beach Island, New Jersey



RUTGERS

Edward J. Bloustein School
of Planning and Public Policy



New York City



New Brunswick, New Jersey



Johnson and Johnson Headquarters



ON CAMPUS Single Student Housing Options

- Buell Apartments
- Single bedroom options with shared living room, bathroom, and kitchen space (all single bedrooms, Buell 4-person option)
- Furnished apartments- beds, desks, dressers, couch, dining table and chairs
- Utilities included- internet, cable television, heat, hot water, laundry in the building, electricity



Busch Campus- Single Student Housing Buell Apartments



- 12-month contract
\$12,198
- \$1,016.50
per month
- 4 single bedrooms



On Campus Family Housing Options

- Marvin apartments
- Only students with family members that need to live with them year-round can apply for family housing
- Units are fully furnished with beds, desks, dressers, kitchen table and chairs, couch
- Marvin apartments include air conditioner in units
- All utilities included - gas, electric, cable, internet, heat
- Laundry on-site
- You can pay rent either monthly or in one lump sum



On Campus Family housing options

- Family housing units are in Piscataway township
- Piscataway has some of the best schools in Middlesex county for children
- School buses pick children up right in front of the apartments at the same location as the Rutgers bus



Family Housing Busch Campus- Marvin Apartments



- 12 month contract
- \$1,572 per month
- Can be paid either monthly or in one lump sum payment
- 2 bedrooms, 1 bathroom
- Fully furnished
- AC in unit



**Marvin Apartments
(Family Housing)**



**Marvin Apartments
(Family Housing)**



Off Campus Housing Options

- <http://ruoffcampus.rutgers.edu/>
- Popular locations - New Brunswick and Highland Park
- Living with roommates can reduce the cost
- Living off campus will mean you need to pay monthly rent PLUS utilities. The average cost of rent ONLY in New Brunswick and Highland Park is \$1,550+ per month for a 1 bed / 1 bath apartment
- Normally you will be required to pay 1st and last months' rent as a security deposit
- Don't forget about needing cable/ internet, electricity, heat and hot water – all will be additional expenses



**Knollwood Elementary School
Piscataway, NJ**



**Knollwood Elementary School
Piscataway, NJ**



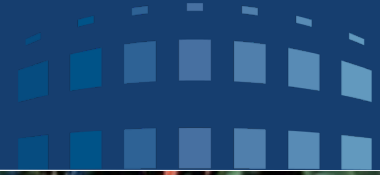
**Martin Luther King Elementary School
Piscataway, NJ**



**Martin Luther King Elementary School
Piscataway, NJ**

RUTGERS

Edward J. Bloustein School
of Planning and Public Policy



Rutgers Bloustein School

RUTGERS

Edward J. Bloustein School
of Planning and Public Policy





Renovated Classroom, 369



Renovated Classroom, 261

RUTGERS

Edward J. Bloustein School
of Planning and Public Policy



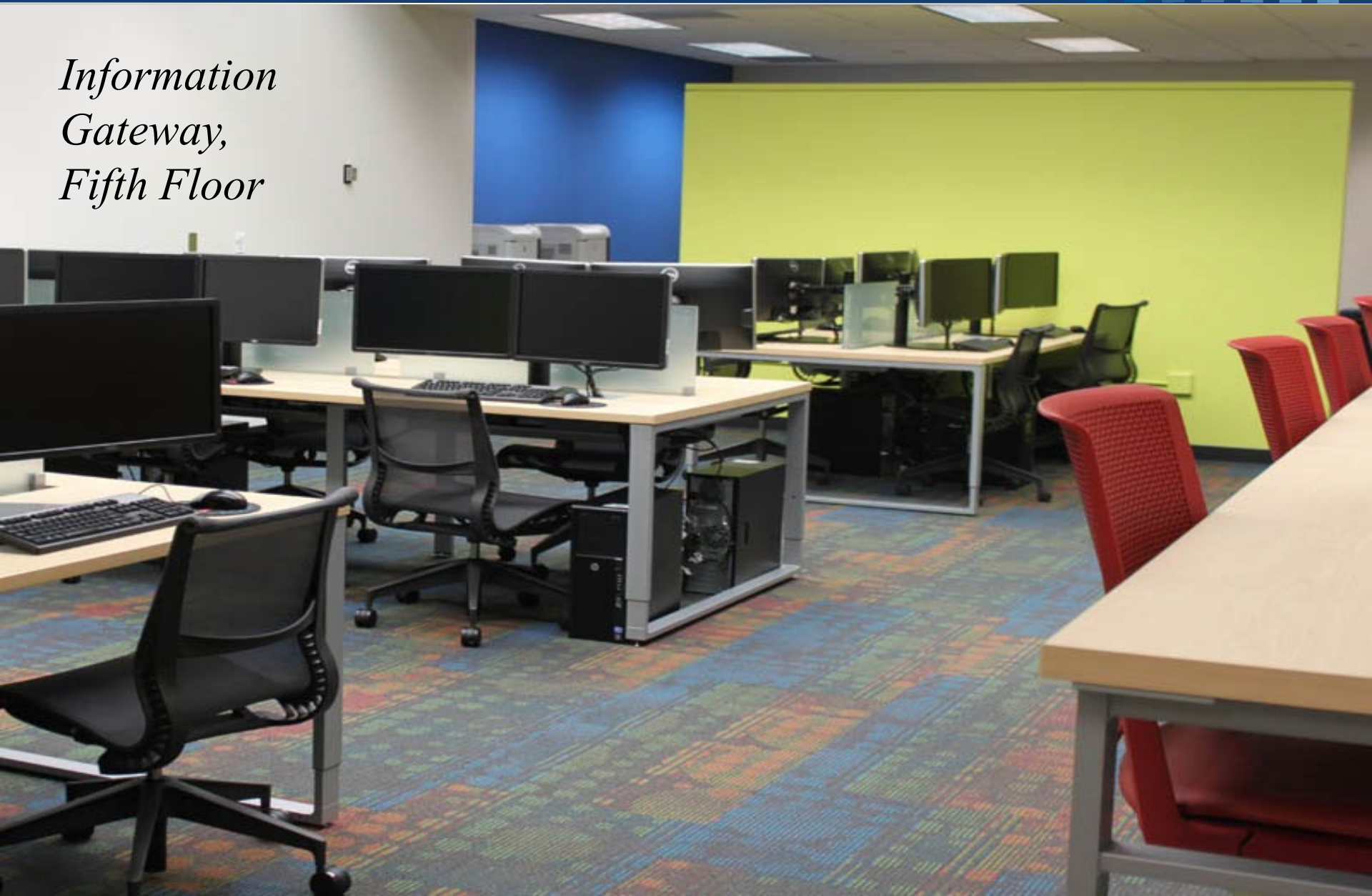
Third Floor Computer Lab



HP Plotters, 372



Information Gateway, Fifth Floor





Information Gateway, Fifth Floor





*Information
Gateway,
Fifth Floor*





Information Gateway, Fifth Floor





Student Collaboration Room









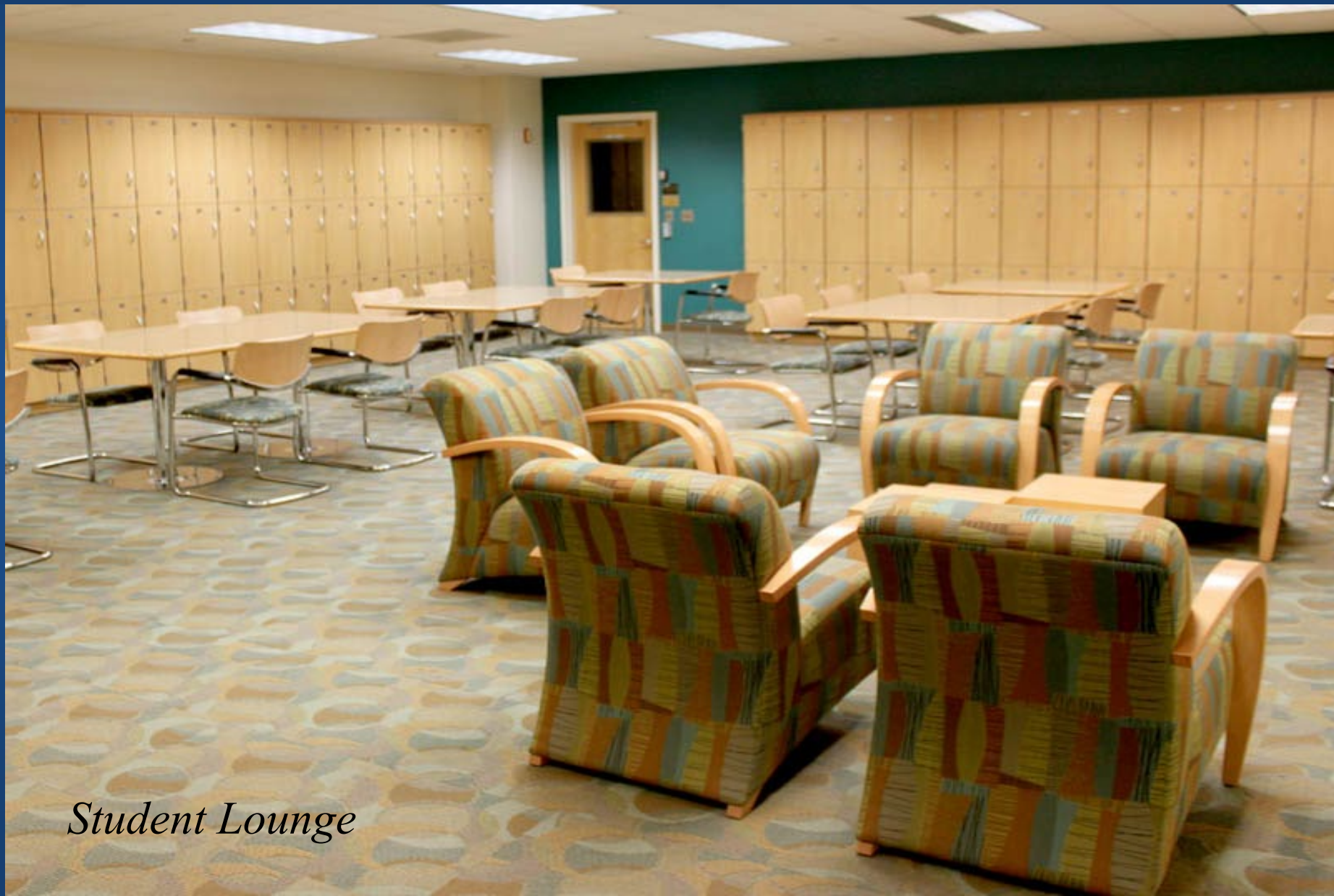




Student Lounge



Student Lounge



Student Lounge

Variety





Students come to study at Rutgers–New Brunswick from 100 countries: Albania to Malaysia and New Zealand to Zimbabwe



HOW TO APPLY **(<https://gradstudy.rutgers.edu/>)**

- Application Form
- Application Fee Payment via Credit Card
- Three (3) Letters of Recommendation (ONLINE (preferred) OR PAPER COPY)
- Financial Documentation / Certification of Funds form for International Students
(PDF format - <http://gradstudy.rutgers.edu/apply/forms>)
- Resume / CV (PDF format)
- Copy of passport photo page for KDI student + any dependents (spouse & children) traveling to US with them (PDF format)
- Personal Statement of Interest (ONLINE)
- All Available Transcripts (PDF format)
- TOEFL or IELTS or Duolingo Score (upload PDF copy of score report)

IMPORTANT: GRE's are WAIVED and NOT required.



KDI 졸업생

- 김유진(부산시 사무관)

“KDI” 학생들을 위한 특별 커리큘럼이
제공되어 도움이 되었습니다.”

“기숙사가 럿거스 캠퍼스 내에 위치해,
안전합니다”

“볼티모어와 뉴욕, 필라델피아 등
대도시와도 지리적으로 근접해 있어
관광하기 좋았습니다”





KDI 졸업생

- 임동국(서울시 교통부 과장)

가족과 함께 생활하기 쾌적한 환경에서
공부할 수 있어 즐거웠습니다.

한국 학생들과 거주민이 많아 문화차이에
적응하는데 어려움이 없습니다.





KDI 재학생

- 양기석(경기도청)

“한국에서는 럿거스란 학교에 대해 생소했는데, 여기와 생활해 보니 지역민들과 학생들이 학교에 대한 자부심이 굉장하다는 걸 느꼈습니다.”

“대도시가 근접해 공부는 물론 문화생활과 여행도 즐길수 있다는게 큰 장점입니다.”





KDI 재학생

- 손성수

Bloustein school of planning and public policy는 미국내 동종학과중 5위권내에 항상 드는 수준높은 학교입니다.

행정학, 정책학, 국제이슈 와 개발 문제 등에 대해서 심도깊은 강의를 들을 수 있습니다.

캠퍼스규모만큼 시설도 훌륭해서 다양한 레저와 대학생활을 누릴 수 있습니다..





Contact Information

- **Jiyoung Kim, Coordinator KDI**
Student Affairs Division
KDI School of Public Policy and Management | KDI
Email: jy_hwang@kdischool.ac.kr
- **Steve Weston, Coordinator EJB**
Edward J. Bloustein School of Planning and Public Policy
Rutgers, The State University of New Jersey
33 Livingston Avenue
New Brunswick, New Jersey 08901
Phone: (848) 932-2728
Email: sdweston@rutgers.edu