

# KDI School of Public Policy and Management Blended Learning Program

2022 GDLN Distance Learning Seminar Series:  
Digital Transformation for Building Back Better



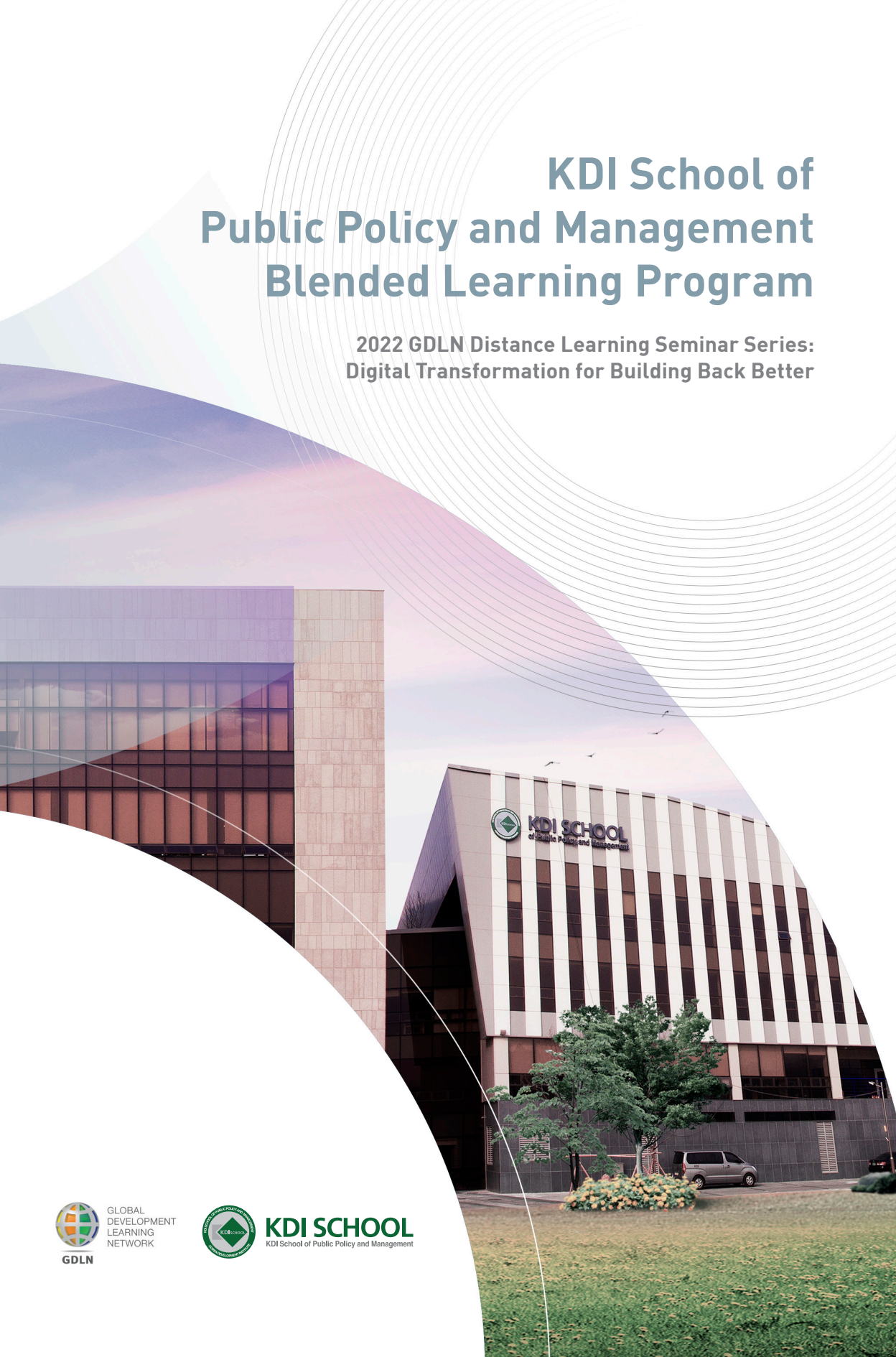
GLOBAL  
DEVELOPMENT  
LEARNING  
NETWORK

GDLN



**KDI SCHOOL**

KDI School of Public Policy and Management



# Program Objective

Knowledge sharing for sustainable development and global prosperity is one of the key motivations behind establishing KDI School of Public Policy and Management. KDI School understands the valuable role the Global Development Learning Network (GDLN) can play as an effective tool for knowledge sharing, especially given the major setbacks caused by the COVID-19 pandemic.

KDI School annually offers the blended learning program that focuses on Korea's key development experiences and valuable lessons learned. The GDLN Korean Center, which is housed within KDI School, is committed to providing optimal opportunities for development practitioners all over the world to learn from not only Korea's development experiences, but also to offer peer-to-peer learning opportunities among participating practitioners.



Since 2001, the GDLN partners have worked together to build a network of global institutions dedicated to promoting sustainable development by closing the digital-divide through distance learning technologies. The value of GDLN has become more apparent as we struggle to conduct our daily lives during the COVID-19 pandemic.

The lingering impact the pandemic has had has accelerated digital transformation around the world. Many experts regard Information and Communications Technologies (ICT) policies as a key factor in determining how well we will manage in the post-COVID era. In other words, digital capacity will increasingly define the competitiveness of a nation and our human resources. It is against this backdrop that this year's GDLN Distance Learning Seminar Series will focus on the topic "Digital Transformation for Building Back Better."

The aim of this Seminar Series will be to study how digital technologies change our economy, society, and public policy by taking a close look at Korea's digital development in industry, health, education, and governance.

# Program Structure

## I. Distance Learning Seminar Series



KDI School's Distance Learning Seminar Series will cover lessons on various dimensions of ICT and digital transformation in the context of the pandemic, highlighting some of Korea's more notable lessons and experiences. The program consists of eight GDLN videoconference seminars that are delivered over a two-month period.

## II. Face-to-Face Training Program



To enhance the overall learning experience of this program, the videoconference seminars will be followed by a face-to-face training program in Seoul, Korea, COVID-19 travel restrictions permitting. This will be a unique opportunity for participants to view Korea's exemplary policies in action and visit relevant organizations and cultural sites to witness firsthand what Korea

has achieved today in this field of ICT.

Participants who have attended the videoconference seminars are eligible to apply to attend the Face-to-Face component of the program. Selected participants will be entitled to roundtrip airfare and housing while attending the program. Due to the COVID-19 pandemic, the feasibility of hosting the Face-to-Face training program will be determined later in the year. KDI School will make updated announcements concerning this part of the training program after the Distance Learning Seminar Series concludes.

# Schedule

## 2022 GDLN Distance Learning Seminar Schedule

	Topic	Date
1	How Digital Technologies Changes Our Economy, Society, and Public Policy	March 16
2	Digital Transformation in Industry: Manufacturing	March 23
3	Digital Transformation in Industry: Healthcare Industry	March 30
4	Digital Transformation and Crisis Management: Korean Government's Response to COVID-19	April 6
5	Digital Transformation and Crisis Management: Changes in Education during COVID-19	April 13
6	Korea's Experience in Educational Transformation	April 20
7	Promises of Data-Driven Policymaking	April 27
8	Challenges in Digital Governance Wrap-up	May 4

\* The time of all eight VCs is set for 16:00, Korea time zone.



# Who Should Attend

## Who Should Attend

The Blended Learning Program at KDI School is intended for experienced managers, general development practitioners and stakeholders who are currently involved in the public sector, education, or relevant ICT industries and government agencies.

## Application Process

Due to COVID-19, all eight videoconferences will be delivered as Zoom Webinars. Participants are encouraged to access the online live seminar through the zoom link KDI School will send every week.

Individual participants should submit an online application form, which is available on the [www.gdln.or.kr](http://www.gdln.or.kr) website.

In case the participant is not available to join the live Zoom sessions due to public holidays or other circumstances, participants may watch a recorded session on the KDI School Learning Management System ("E-edu") in lieu of his/her inability to attend the videoconference live. However, since attendance during the live Zoom sessions is critical, participants may only miss two live videoconference sessions and watch those missed sessions via the online recordings.

Participants who have attended all the videoconference seminars of the Blended Learning Program can apply for the face-to-face training later this year. If participants miss more than two Zoom sessions, they are no longer eligible to apply for the face-to-face component of the program.

However, please note that the face-to-face training program will be confirmed pending COVID-19 circumstances and travel restrictions.

For additional information regarding the Distance Learning Series Program, please visit the [www.gdln.or.kr](http://www.gdln.or.kr) site and click on the Blended Learning Program tab, followed by the Programs tab.

## Contact Information

KDI School of Public Policy and Management

263 Namsejong-Ro, Sejong-Si, Korea (30149)

GDLN Coordinator

Taeyoung Kim (Email: [gdlnkorea@kdis.ac.kr](mailto:gdlnkorea@kdis.ac.kr))

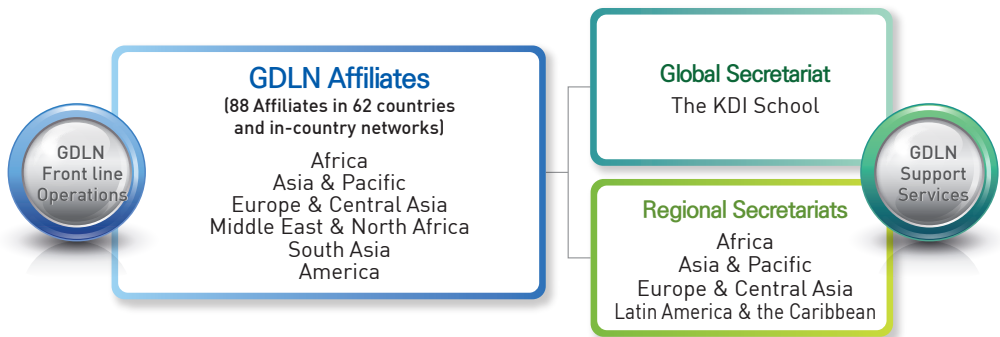
# About KDI School

KDI School of Public Policy and Management was founded in 1997 as the educational arm of the Korea Development Institute (KDI), the country's leading economic policy think tank. KDI School was established with a two-fold mission: to produce international experts with theoretic knowledge and practical skills in the field of development economics and public policy; and to foster future leaders who can cope with the rapidly changing international environment and exercise global leadership in every sector of our society.

Since its inception, KDI School has cultivated over 6,000 professionals from 120 different countries who have led positive change in their respective spheres of influence. The School has grown exponentially due to its unwavering commitment to excellence in teaching, promoting a truly international learning environment, and by serving as a global hub for knowledge sharing.



# About GDLN Korea



GDLN (Global Development Learning Network) is a unique partnership of over 88 affiliates in more than 62 countries that provides learning and knowledge exchange activities globally each year. GDLN affiliates design customized learning solutions for those working in development by taking advantage of a large pool of resources. The tools for communication include a combination of face-to-face interactions, webinars, e-learning content, and videoconferences.



In 2001, KDI School was designated as the only affiliated Korean center. Our vision is to provide integrated educational opportunities on Korea's development experiences for policy makers and development practitioners around the world through blended learning programs. Our goal is to connect with policy makers and related institutions of development to effectively contribute to balanced, global development and enrich development cooperation.



**KDI** 한국개발연구원  
Korea Development Institute

**KDI**



**KDI SCHOOL**  
Graduate School of Policy and Management

263 Namsejong-Ro, Sejong-Si, Korea (30149)

Tel: +82-44-550-1269

[www.kdischool.ac.kr](http://www.kdischool.ac.kr) / [www.gdln.or.kr](http://www.gdln.or.kr)