

# McCourt MPM-KDI GMP PRESENTATION

March 18, 2024

---

GEORGETOWN UNIVERSITY | **McCourt School**  
*of Public Policy*

# Georgetown University: A Brief History

- Founded in 1789 by Father John Carroll
- Awarded Federal charter in 1815
- Civil War and the **Blue & Gray**
- Father Patrick Healy (GU President 1873-1882) the “second founder”
- First woman accepted in 1969
- First lay president 2001

# The McCourt School

## **Georgetown Public Policy Institute (GPPI)**

*Founded in mid 1990s originally part of Government Department*

## **2013 McCourt School of Public Policy founded**

### **Our degrees:**

- Master of Public Policy (MPP)—original
- Master of Policy Management (MPM)—2001
- Master of International Development Policy (MIDP)—2012
- Master of Science in Data Science for Public Policy—2018

### **Student Enrollment:**

300+ MPP

35+ MIDP

90+ MPM

40+ DSPP

### **Faculty:**

45 core and full-time faculty; 100+ affiliated faculty

# OUR NEW HOME

- Georgetown's Capitol Campus
- McCourt's flagship new home
- Teaching and Research all under one roof
- Opening Date: Summer 2024



## MPM Class Profile

92

Number of  
Students  
Currently Enrolled

\*25% are part-time students

33.7

Average Age

9.6

Years of Work  
Experience

21.7%

International

54.9%

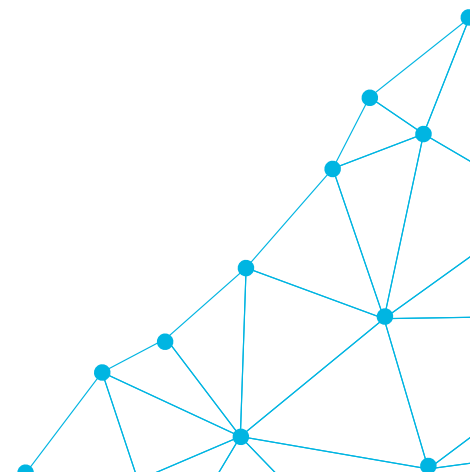
Minority  
Domestic Students

41.3%

Identify  
Female

14

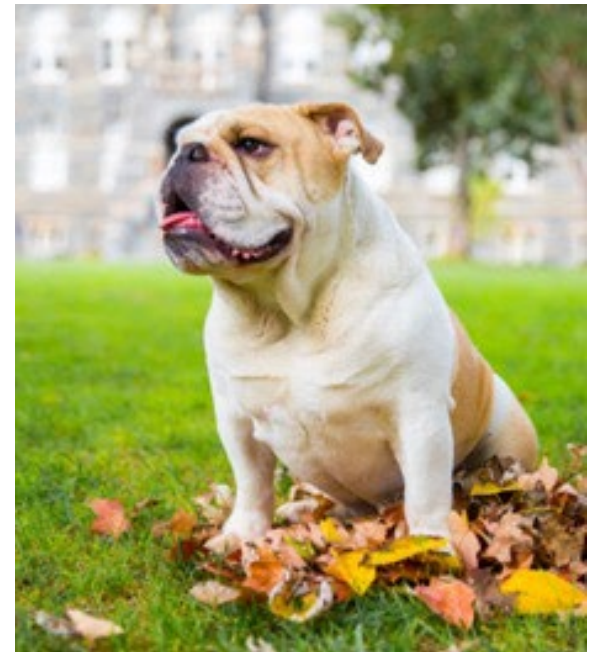
Countries  
Represented



# Partnerships

---

- Joint Chiefs of Staff Interns (20)
- National Urban Fellows (20)
- Tokyo Metropolitan Government (2)
- NY Police Department Scholars (1-2)
- Korea Development Institute (1-5)



# MPM Curriculum Overview

Semester  
Courses

Summer  
Institutes

Capstone  
Project

Electives

**MPM-GMP - 27 credits at McCourt**

# Course Sequence – KDI Dual Degree Spring Start



**Spring**

Economic Analysis  
for Public Policy

Elective 1

Elective 2

**Summer**

Public Policy Process

Public Management

Ethics & Public Policy

**Fall**

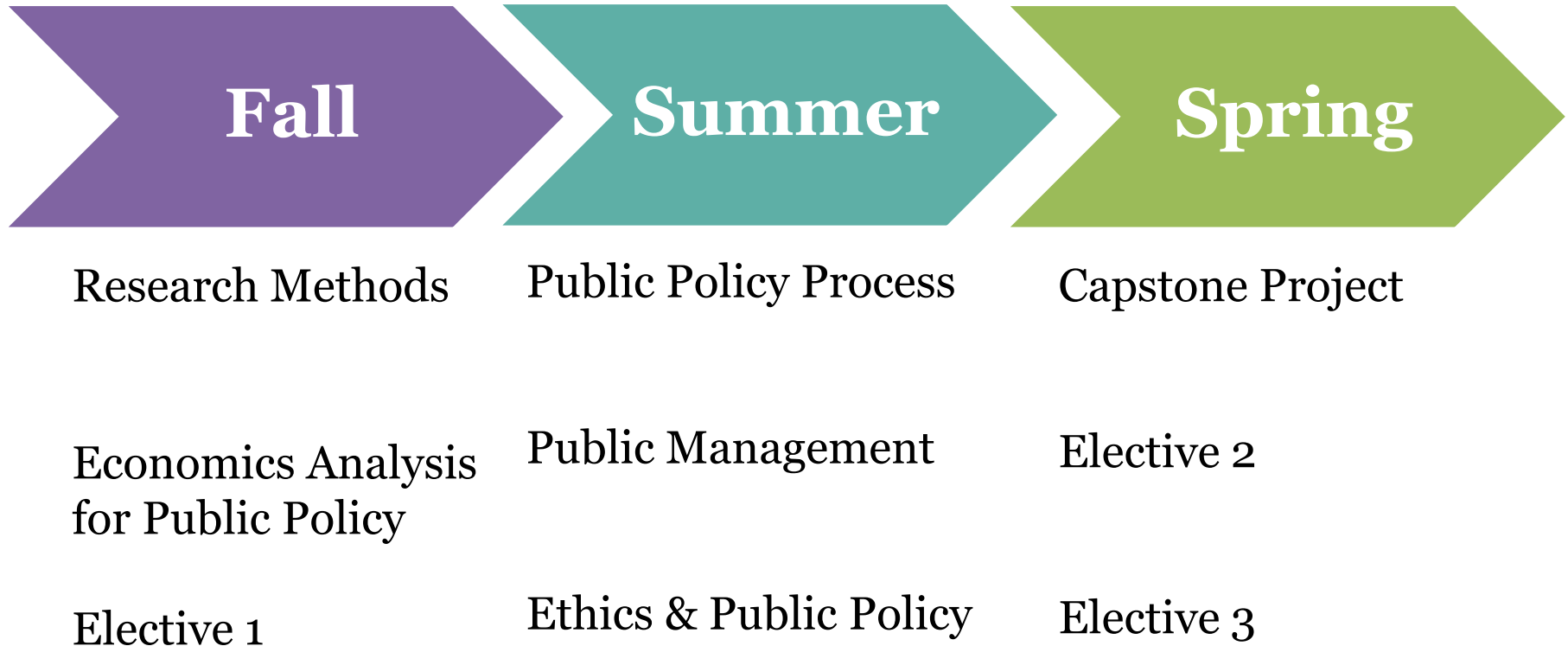
Research Methods

Capstone Project

Elective 3



# Course Sequence – KDI Dual Degree Fall Start



# Electives

## Areas of Focus:

- ❖ U.S. Domestic Economic Policy
- ❖ International Economic Policy
- ❖ Education Policy
- ❖ Environmental & Regulatory Policy
- ❖ Health Policy
- ❖ Homeland Security Policy
- ❖ Development Policy
- ❖ Management & Leadership
- ❖ Methods
- ❖ Political Strategy & Governance
- ❖ Social Policy

## Examples:

- ❖ Political Economy of Developing Countries
- ❖ Behavioral Economics
- ❖ Federal Budget in a Time of Madness
- ❖ Nuclear Power, Climate Change & Clean Power
- ❖ Health Policy & Politics
- ❖ Homeland Security
- ❖ Public Leadership
- ❖ Data Visualization
- ❖ Education, Policy, and Civil Rights
- ❖ Urban Law and Policy

# **Beyond the Classroom: Student Engagement Opportunities**

# Student Organizations

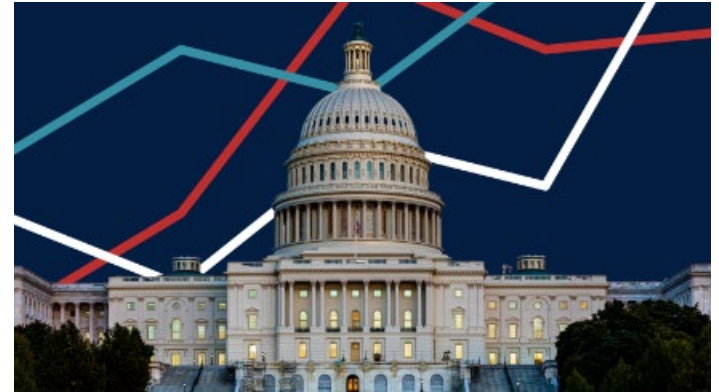
GEORGETOWN | McCourt School



- McCourt Student Association (MSA)
- Georgetown Public Policy Review (GPPR)
- McCourt Policy in Practice (MPiP)
- Women in Public Policy Initiative (WiPPI)
- LGBTQ Policy Initiative (LPI)
- Black Perspectives on Public Policy (BPP)
- McCourt Education Policy Initiative (MEPI)
- McCourt Environment & Energy (E&E)
- AfriKa: African Policy Student Association
- Latin American & the Caribbean Policy Association (LAPA)
- South Asian Policy & Research Initiative (SAPRI)
- East Asian Policy Association (EAPA)
- Georgetown Technology Policy Initiative (GTPI)
- National Defense Policy Initiative (NDPI)
- Migration and Refugee Policy Initiative (MRPI)
- Development Implementer Group (DIG)
- European Policy Organization (EPO)
- Labor Policy Association at McCourt (LPAM)
- Criminal Legal Policy Organization (V:)
- Georgetown Latino Policy Initiative (GLPI)

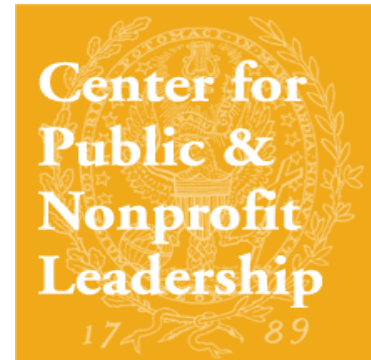
# Exposure to Policy Leaders

- ❖ Faculty/Instructors
- ❖ Dr. Anthony Fauci
- ❖ Guest Speakers
- ❖ Decision Desk Headquarters
- ❖ McCourt & Georgetown campus events
- ❖ Georgetown Institute for Politics and Public Service (GU Politics)



# Research Centers

- Government Affairs Institute
- Health Policy Institute
- Health Care Financing Initiative
- Center for Children & Families
- Center on Health Insurance Reforms
- Georgetown University Initiative on Innovation, Development & Evaluation (gui2de)
- Center on Education & the Workforce
- Center for Juvenile Justice Reform
- Center for Public & Nonprofit Leadership
- Center for Research on Children in the United States
- Center for Retirement Initiatives
- Massive Data Institute
- Tech & Public Policy
- Edunomics Lab
- Future Ed



# Career Development at McCourt

- **Services**

- Career Advising/Counseling Appointments
- Internship and Job Announcements
- Career Events (Job Fairs, Employer Info Sessions, etc.)
- Professional Development Workshops
- McCourtConnects! And Interstride (online jobs database)
- Interview Prep/Mock Interviews
- Resume/Cover Letter Reviews
- Networking opportunities
- Alumni networking events and connections



# Admissions

## ○ **Application Requirements**

- Resume or CV
- Application Fee \$90
- All academic transcripts (Undergraduate and KDI School)
- Personal statement (maximum 500 words)
- Optional statement
- TOEFL minimum 80; preferred 100+
- Two letters of recommendation (at least one from KDI School faculty)
- Deadline for Spring 2025: October 1, 2024
- 3 Deadlines for Fall 2025: December 1, 2024, January 15, 2025, latest is March 1, 2025



# Key Contacts

**Lynn Ross, MPM Faculty Director**

[rosslc@georgetown.edu](mailto:rosslc@georgetown.edu)

**Julie Ito, Director of Admissions:**

[itoj@georgetown.edu](mailto:itoj@georgetown.edu)