



UNIVERSITY OF LEEDS

# Welcome to the University of Leeds

**Claire Freeston**

*International Marketing Manager for  
South Korea*

*Korea Development Institute  
March 2019*



# The City of Leeds



UNIVERSITY OF LEEDS

- 3<sup>rd</sup> largest city in the UK
- One of the UK's largest centres for business, legal and financial services
- Excellent transport links
  - Just over 2 hours from London by train
  - International airports in Leeds and Manchester
  - Low cost flights to European cities
- Located in Yorkshire
  - One of the happiest place to live in the UK
  - one of the greenest counties in the UK
  - best travel destination in Europe





# The City of Leeds



UNIVERSITY OF LEEDS

- Student friendly city
  - 3 Universities
  - student population over 70,000
  - multi-cultural and vibrant city
- Bustling city within a short distance to beautiful countryside
- Centre in the North of England for sports, the arts, theatre, opera and music
  - First Direct Arena
  - Leeds Grand Theatre and Opera House
  - Tour de France Grand Depart 2014
- Over the last 10 years, £3.2bn worth of major development projects have been undertaken in Leeds





# The University



UNIVERSITY OF LEEDS



# The University



UNIVERSITY OF LEEDS



- Established in 1904, Russell Group University
- One of the largest universities in the UK with over 33,000 students from over 150 countries
- UK 2017 'University of the Year' (Sunday Times 2017)
- In the top 100 universities in the world (QS World University Rankings, 2019)
- In the top 10 universities in the UK, according to The Times and The Sunday Times Good University Guide 2018
- In the top 10 universities in the UK in the Guardian University Guide 2019
- Top 10 in the UK for Research (REF 2014)



# Subjects and courses



UNIVERSITY OF LEEDS

## Faculties

- Arts, Humanities and Cultures
- Business
- Biological Sciences
- **Social Sciences**
- Engineering
- Environment
- Mathematics and Physical Sciences
- Medicine and Health



### Popular course choices include:

- Engineering: Electrical, Civil, Chemical, Mechanical and Computing
- Business: Marketing, International Business, Management, HRM, Economics, Accounting and Finance
- Law, Politics and International Relations, International Development, Social Policy with Enterprise
- Maths: Mathematics with Finance, Actuarial Mathematics,
- Physics, Food Science, Biological Sciences
- Geological Sciences, Environmental Science, Environment and Business
- Joint Honours combinations – eg Modern Languages or Arts



UNIVERSITY OF LEEDS

# School of Politics and International Studies





- Top 5 in the UK for research quality and impact (REF, 2014)
- Top 50 in the world for Development Studies (QS World University Rankings, 2018)
- International community of staff and students





# Masters courses



UNIVERSITY OF LEEDS



- MA Global Development (pathways in Africa, Education, Gender and International Political Economy)
- MA Global Governance and Diplomacy
- MA International Relations
- MA International Relations and Politics of the Middle East
- MSc Political Science
- MA Conflict, Development and Security
- MA Security, Terrorism and Insurgency

# Careers



UNIVERSITY OF LEEDS

- Students are in the top 10 most targeted in the UK by employers (High Fliers Survey 2018)
- Focus on employability across all student activity and emphasis on career development and employer engagement
- Award-winning Careers Centre
- Work experience opportunities
- JobLink
- Guest speakers



# Career destinations - POLIS

---

- UK Parliament
- University of Leeds
- Royal Bank of Scotland
- Metropolitan Police
- Healix
- Lecturer
- Parliamentary Assistant
- Teacher
- Police Officer



# Entry requirements (Masters)

---



UNIVERSITY OF LEEDS

- A bachelor degree with a 2:1 (hons) or a non-UK equivalent in a social science, humanities, or other related discipline.
- In Korea, this is a Bachelors degree GPA of 3.5 out of 4.5
- For English language, at least IELTS 6.5 with no less than 6.0 in each component (or equivalent)
- Pre-sessional English language courses are available





# Application process (Masters)

---

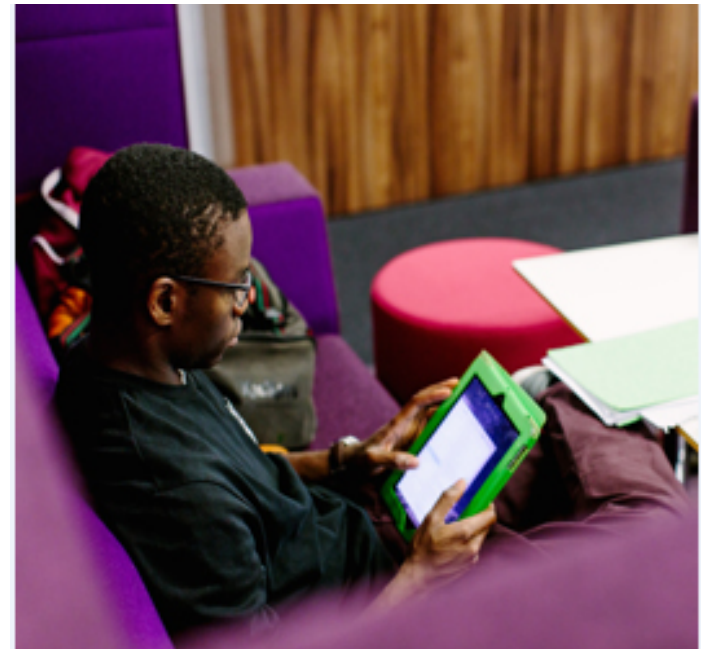


UNIVERSITY OF LEEDS

- Study at the KDI on one of these programmes: MPP Master of Public Policy or MDP Master of Development Policy or MPM Master of Public Management
- Leeds MA applications are made online via your Applicant Portal

You need to submit:

- Application form
- Degree certificates and academic transcripts
- English language evidence (eg. IELTS/TOEFL results)
- Details of two referees



# Fees and Scholarships



UNIVERSITY OF LEEDS

Tuition fees vary per programme

Please see the details on Course Finder for 2019 entry – normally £18, 500 for POLIS

Living Costs (estimate)

£1,015 per month – UKVI

Scholarships

These are available for KDI students – a partial scholarship of £1000 will be offered to all (reduction of fees) and up to 5 Merit Scholarships will be available (on the basis of strong academic ability, and enhanced language levels)





- 3<sup>rd</sup> in the UK for student experience (2018 Times Higher Education Student Experience Survey)
- Excellent student support available
  - Dedicated International Student Office
  - Welcome and orientation programme
  - Personal tutors
  - Skills Centre
  - Leeds Student Medical Practice
- Leeds University Union
  - One of the largest in the UK
  - Refurbished over the summer in 2017
  - Over 300 student led clubs and societies
  - Live music, shops, cafes, bars, and nightclubs
  - Brand new refurbished building opening in 2017
  - Student advice centre
  - Active Korean Society – LUKS: [www.facebook.com/groups/luu.koreansociety/](https://www.facebook.com/groups/luu.koreansociety/)

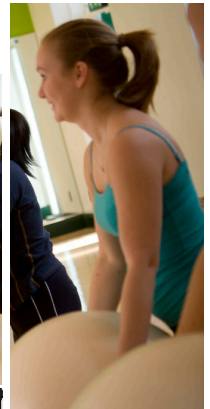


# The Edge



UNIVERSITY OF LEEDS

- 1<sup>st</sup> in Russell Group for Good Sports Facilities (Times Higher Education Student Experience Survey 2015)
- Cater for all levels of interest – recreational, performance or excellence
- Indoor and outdoor facilities for sports such as; football, badminton, rugby, table tennis, squash etc.
- Largest fitness suite of any UK University
- Olympic sized swimming pool



# Accommodation



UNIVERSITY OF LEEDS



- Guaranteed for duration of study
- Wide choice of facilities and costs
- Self-catered or catered residences
- Internet connection in all rooms
- 'The Edge' membership included
- Variety of locations
- Good choice of private sector housing also available
- Deadline to apply is December 1<sup>st</sup>
- Wait for your offer (which you must accept) and then your Leeds Student ID number before applying
- [accommodation.leeds.ac.uk/](https://accommodation.leeds.ac.uk/)

# Excellent student support



UNIVERSITY OF LEEDS



- Dedicated International Student Office

- Welcome and Orientation Programme



- Your own academic personal tutor

- Leeds Student Medical Centre

- Careers centre – careers advice and support

- Job Link – part-time job vacancies





# Link to Leeds



UNIVERSITY OF LEEDS

Contact one of our current students

- Talk to the ambassadors directly via email, Skype, instant messaging or social media.
- Hear about their experiences of being a student at Leeds
- Get first hand advice on how to prepare for your studies
- Take part in our fortnightly live chat events



[www.leeds.ac.uk/linktoleeds](http://www.leeds.ac.uk/linktoleeds)



[www.facebook.com/linktoleeds](https://www.facebook.com/linktoleeds)



[twitter.com/link\\_to\\_leeds](https://twitter.com/link_to_leeds)

## Meet our Korean ambassadors...

Soyeong Moon is studying BSc Psychology - soyeong-link@leeds.ac.uk

Stefanie (Hee Su) Lee is studying BA Art and Design - stefanie-link@leeds.ac.uk

**ONLINE KOREAN LIVE CHAT: 27 March 2019 – 8pm**

<https://linkto.leeds.ac.uk/events/chat-to-our-korean-ambassadors/>







# Thank you!

**Any questions?**

**Visit us online: [www.leeds.ac.uk](http://www.leeds.ac.uk)**

**Email Claire (International Marketing Manager for South Korea): [c.e.freeston@leeds.ac.uk](mailto:c.e.freeston@leeds.ac.uk)**

**Email Politics Admissions: [pgpolis@leeds.ac.uk](mailto:pgpolis@leeds.ac.uk)**